



# Immediate Implant Placement with Thin Buccal Bone and Contour Augmentation

## Patient History

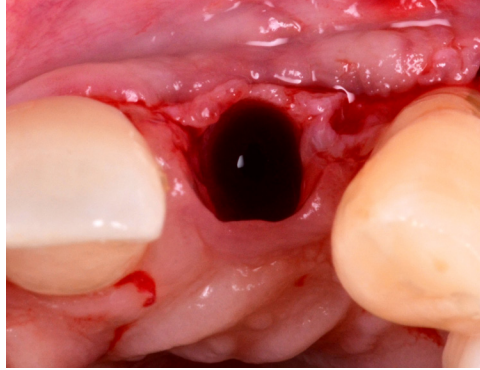
The patient is attending regular supportive periodontal therapy following active treatment, with a hopeless prognosis for the lateral incisor due to advanced mobility.

## Process & Conclusion

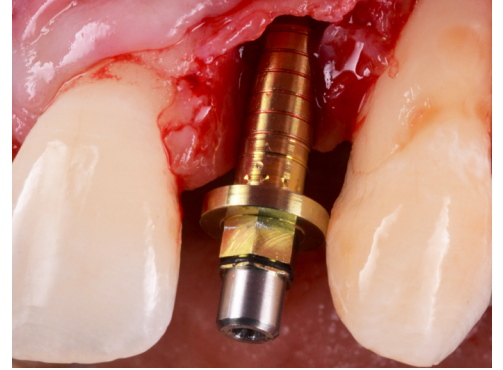
Immediate implant placement was deemed suitable due to the achievement of primary stability in the prosthetically-guided implant position. In order to attenuate dimensional changes associated to hard tissue, simultaneous contour augmentation was performed. The case resulted in high patient satisfaction in the context of peri-implant health.



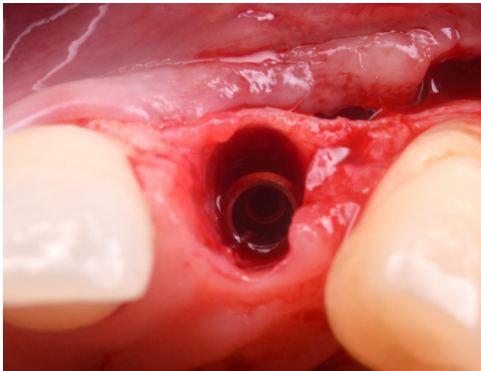
Clinical presentation



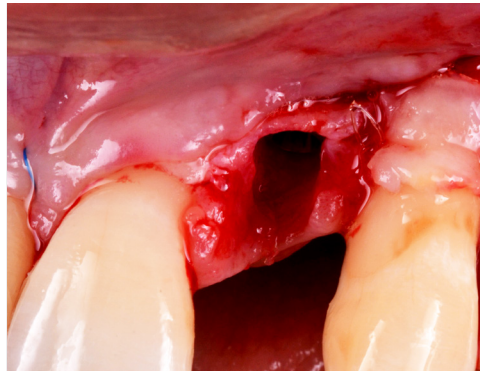
Occlusal View of residual socket



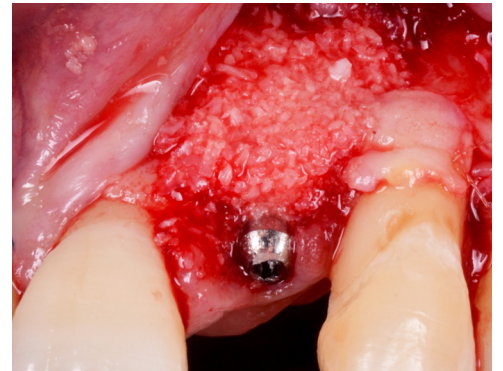
Narrow diameter implant in the correct 3-dimensional position



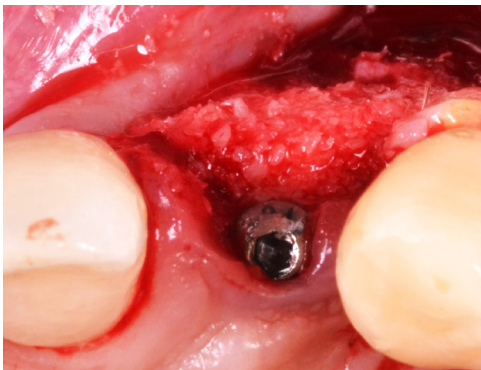
Occlusal view



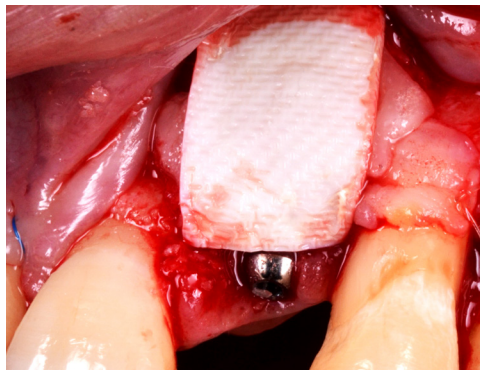
Frontal view



Placement of the InterOss® and autogenous bone mixture.



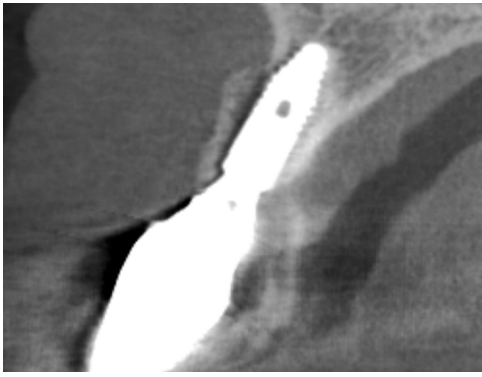
Occlusal view of contour augmentation



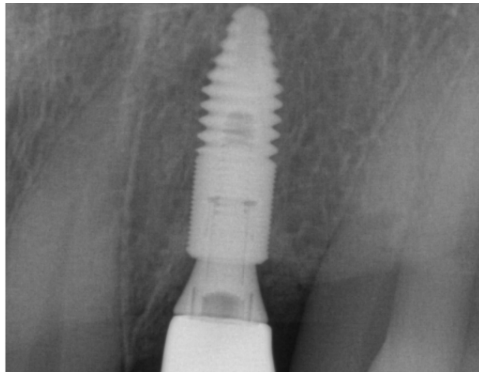
Ossifying matrix



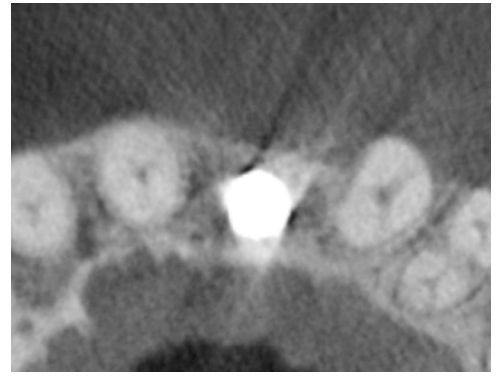
Clinical assessment at 3-year follow-up



CBCT view at 3-year follow-up



Periapical x-ray at 3-year follow-up



CBCT view at 3-year follow-up