



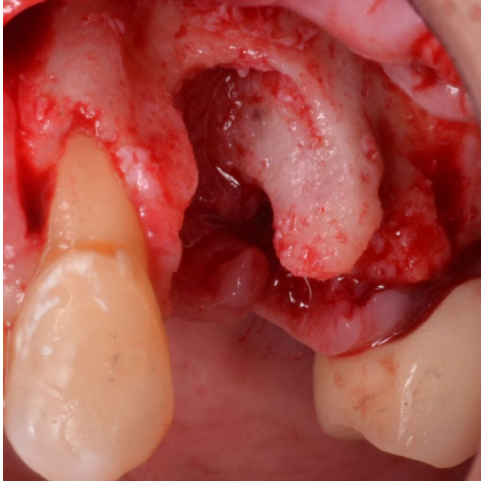
Extraction of hopeless teeth and treatment with ridge augmentation

Patient History

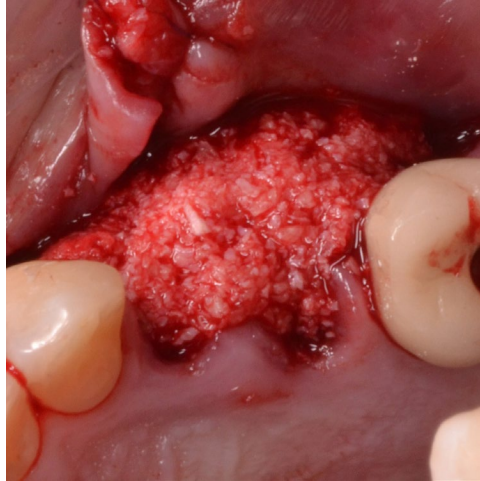
Patient had periodontally hopeless teeth which had to be extracted. The affected bone had been severely resorbed with major dehiscence on both the buccal and lingual walls, requiring a ridge augmentation before implants can be installed.

Process & Conclusion

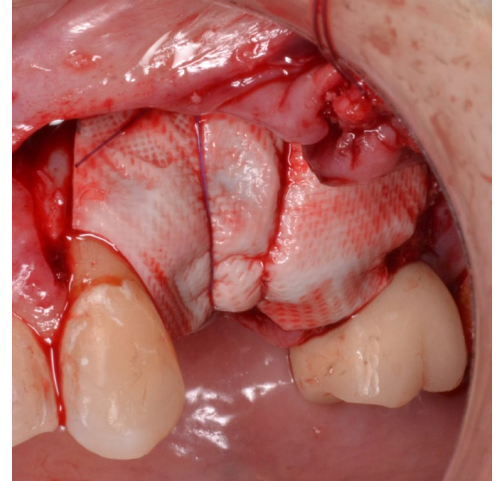
The huge cavity was filled with a mixture of InterOss® and autogenous bone before it was wrapped with a collagen membrane. Re-entry at 4 months revealed the missing bone mass has been complete regenerated, enabling the placement of implants.



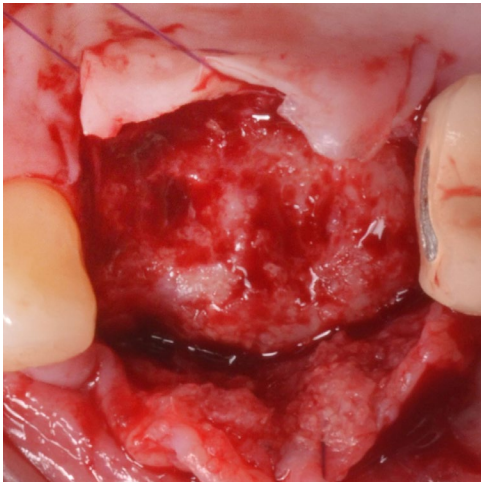
A view of the bone defect.



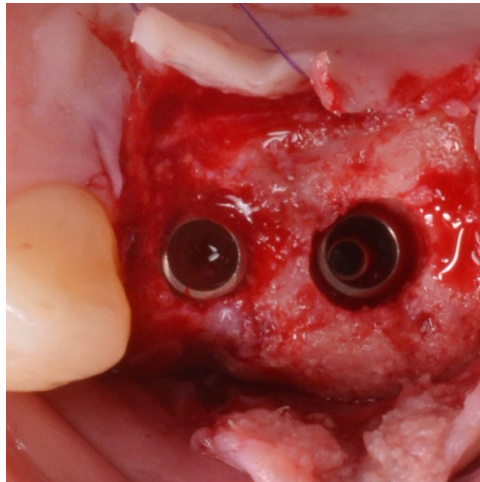
Placement of the InterOss® and autogenous bone mixture.



Collagen membrane placement.



Re-entry view at 4 months.



Implant placement.