



# Implant removal due to peri-implantitis with simultaneous ridge augmentation

## Patient History

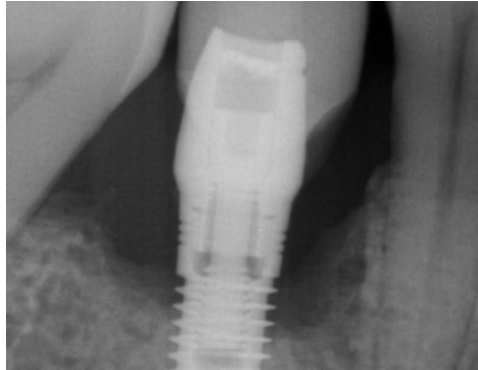
Patient suffered from an advanced peri-implantitis with bone loss occurring all around the implant, requiring an extraction. The condition was then to be treated with bone grafting to fill in the gap.

## Process & Conclusion

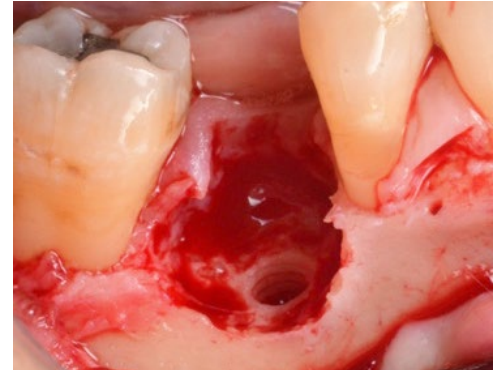
After the implant was extracted, the defect was filled with a mixture of InterOss® and autogenous bone. Re-entry at 4 months showed regenerated bone at the cavity, enabling a new implant placement.



Pre-operative view.



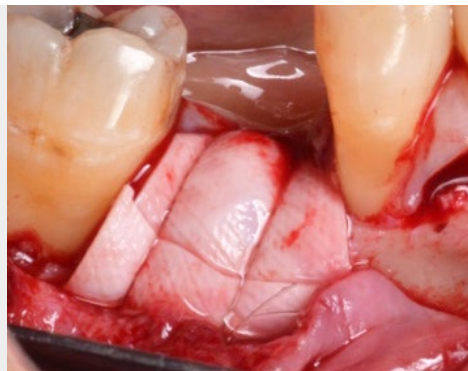
Pre-operative X-ray.



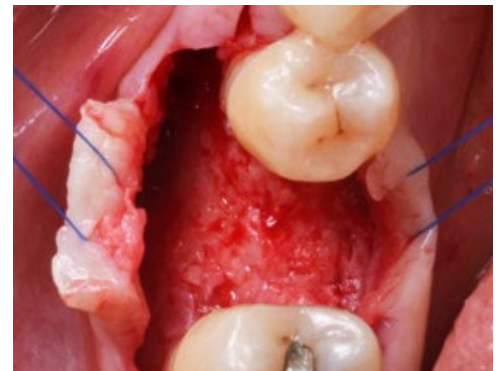
A view of the bone defect.



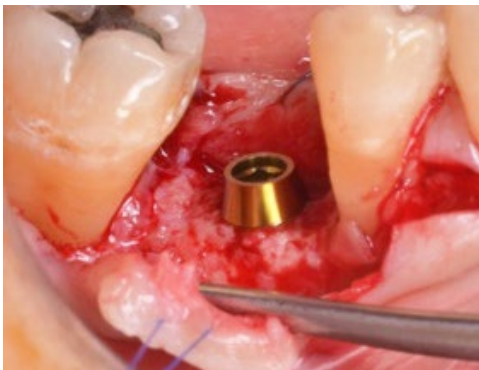
Placement of InterOss® and autogenous bone mixture.



Collagen membrane placement.



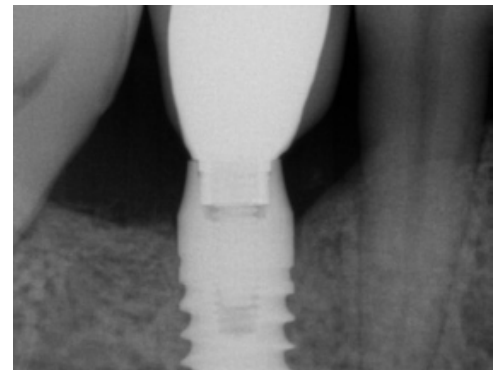
Re-entry view at 5 months.



Implant placement.



Post-operative view at 1 year.



Post-operative X-ray at 1 year.