

Extraction of deciduous teeth and guided bone regeneration of anterior mandible

Patient History

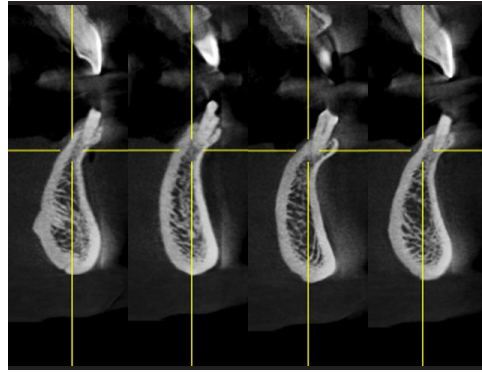
Patient had deciduous anterior incisors which required extraction and guided bone regeneration to preserve the sockets. Once the bone has been restored, implants were prescribed to replace the missing teeth.

Process & Conclusion

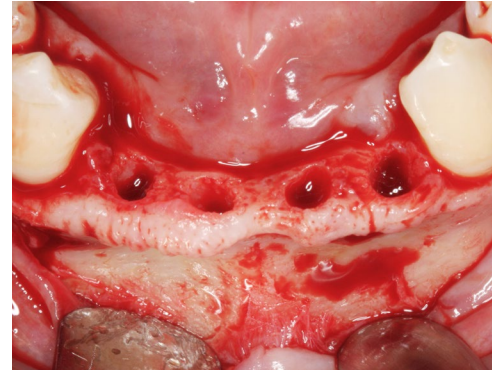
The extraction sockets were filled with a mixture of InterOss® and allograft. Re-entry at 7 months post-bone grafting revealed new, solid bone where the defect used to be thereby enabling the placement of implants.



Pre-operative view.



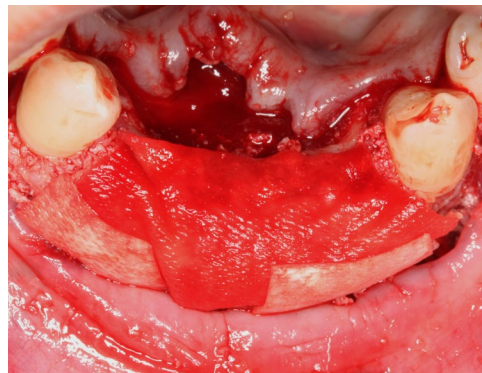
Pre-operative CBCT scans.



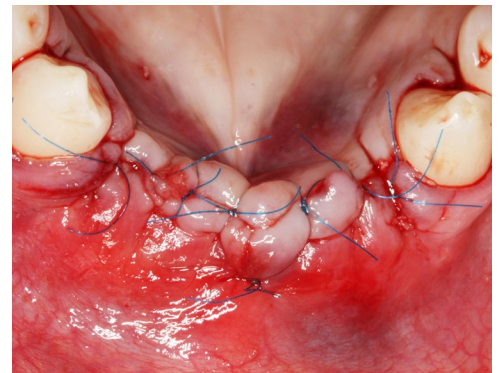
A view of the bone defect.



InterOss® and allograft mixture placement.



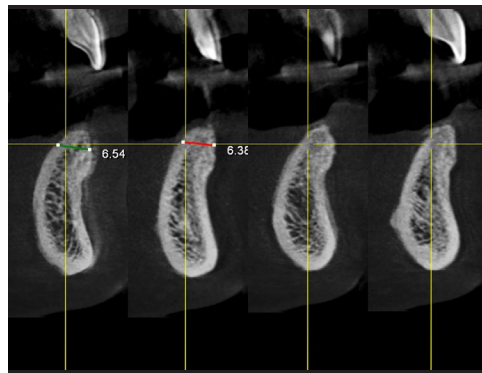
Collagen membrane placement.



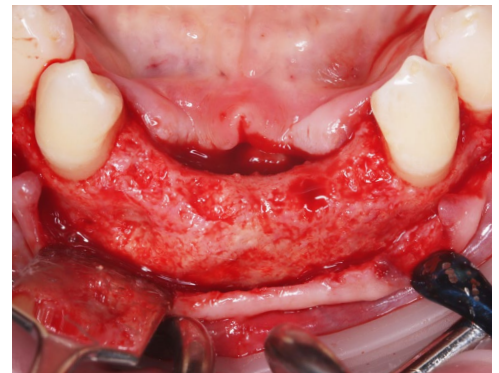
Post-surgical view.



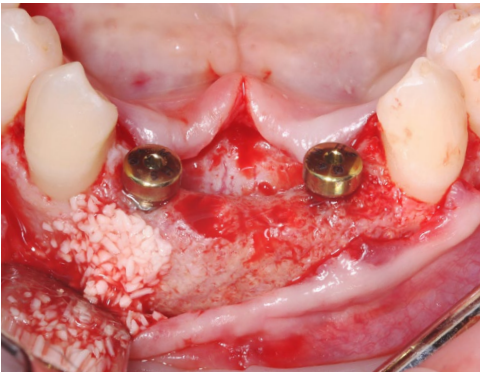
Post-grafting view at 6 months.



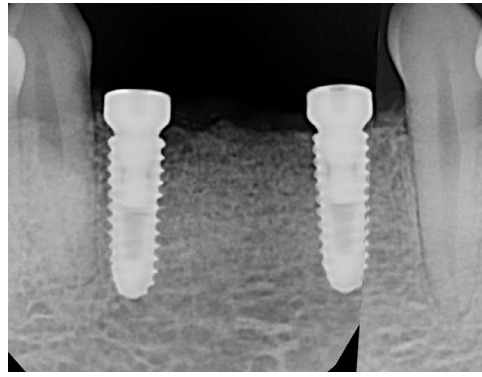
Post-grafting CBCT scans at 6 months.



Re-entry view at 7 months.



Implant and healing abutment placements.



Post-implant X-ray.



Post-implant follow-up at 3 months.