

Immediate implant placement with simultaneous ridge augmentation

Patient History

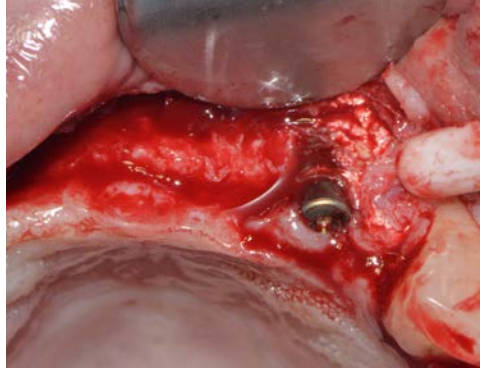
Patient was missing teeth along their maxillary labial area with the affected bone undergoing a severe resorption. The condition was to be treated with bone grafting to restore the massive thickness loss and implants.

Process & Conclusion

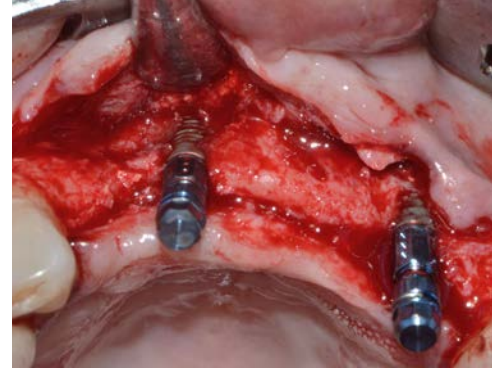
After an additional implant was installed, the sunken ridge was filled with InterOss® granules and wrapped with InterCollagen® Guide and a PTFE membrane. Re-entry at 5 months revealed a substantial bone gain with a density that's able to securely hold the implants.



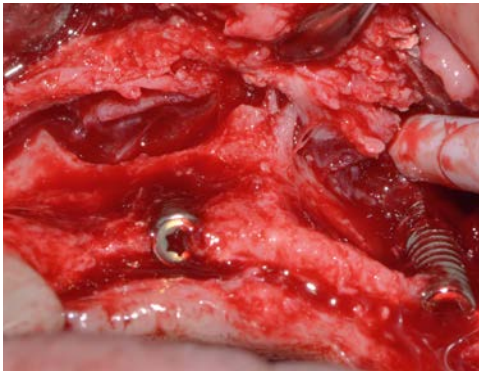
Pre-operative view.



A view of a previously installed implant.



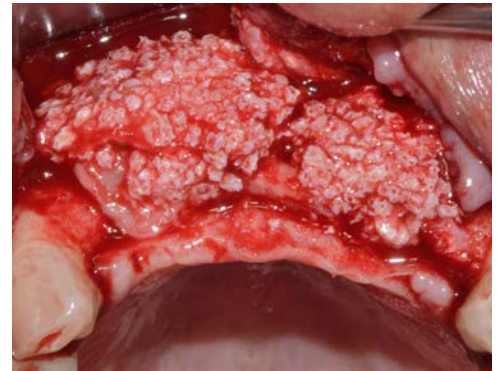
Placement of an additional implant.



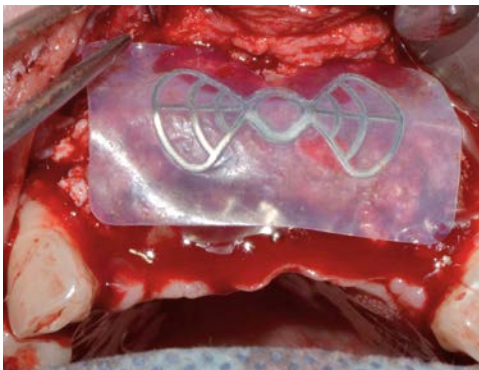
A view of the bone defect.



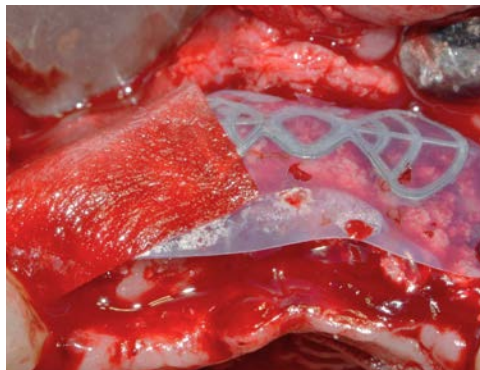
InterOss® granules that have been mixed with the patient's blood.



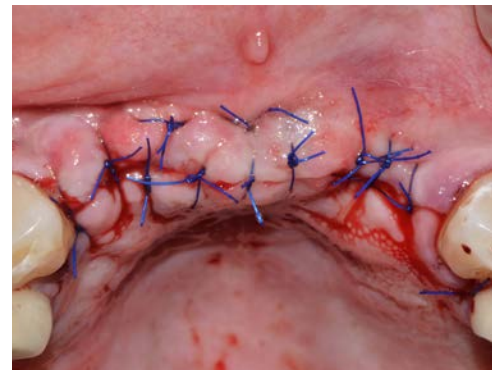
InterOss® placement.



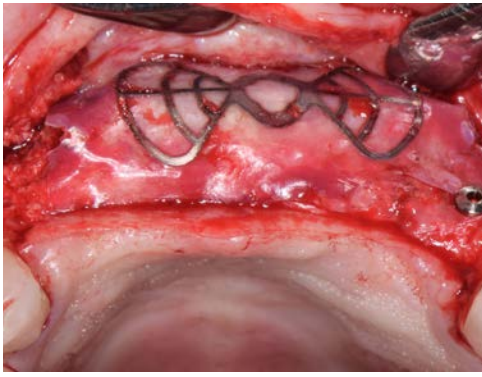
PTFE membrane placement.



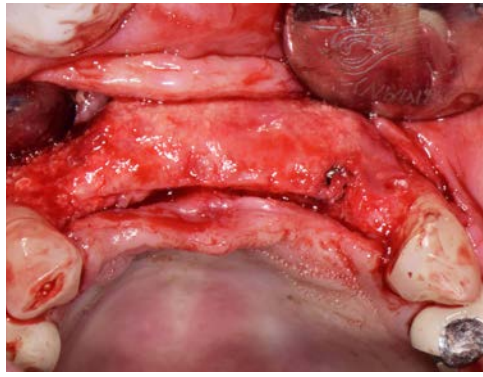
InterCollagen® Guide placement.



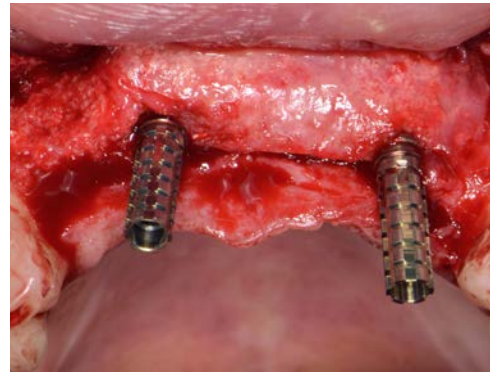
Post-surgical view.



View at re-entry after 5 months; note the absent InterCollagen® Guide.



Post-grafting view at 5 months.



Abutment placement.



Crown placement.



Follow-up view at 3 months.



Alternative follow-up view at 3 months.