

Guided bone regeneration of a Type-IV socket without primary flap closure

Patient History

Patient had a compromised socket which required an extraction of the affected tooth. Guided bone regeneration was needed to restore the cavity in order for an implant to be installed.

Process & Conclusion

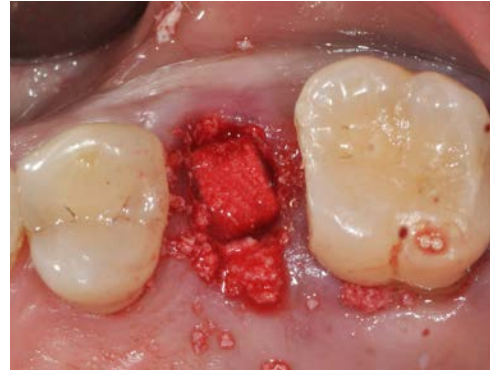
After the extraction, the socket was packed with InterOss® Collagen and, without a primary flap closure, simply covered with a collagen membrane. Re-entry at 4 months shows the cavity has fully healed into new bone.



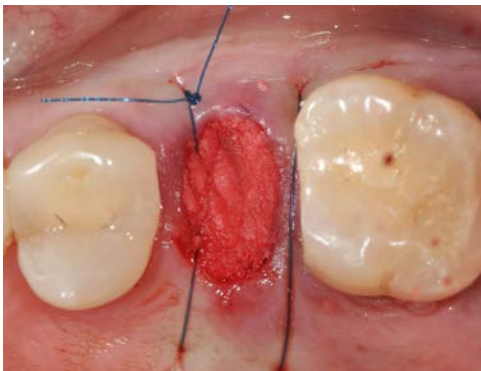
Pre-operative view.



Post-extraction view.



InterOss® Collagen placement.



Post-surgical view.



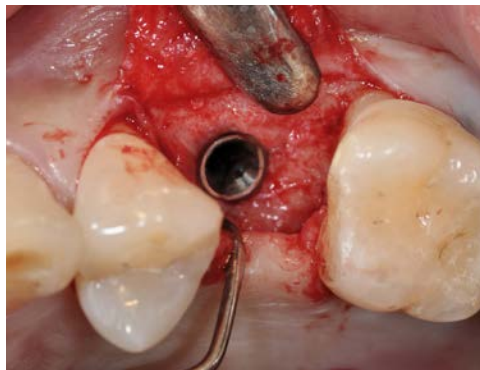
Follow-up view at one week.



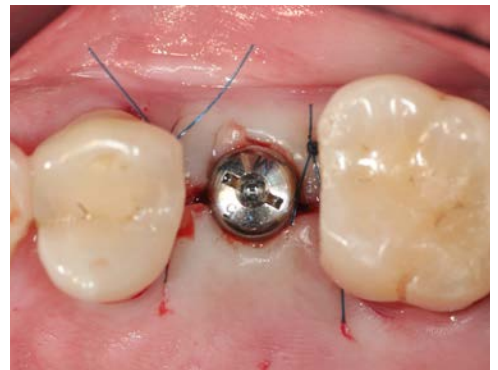
Pre-implant view at 4 months.



Re-entry view.



Implant placement.



Post-surgical view.