

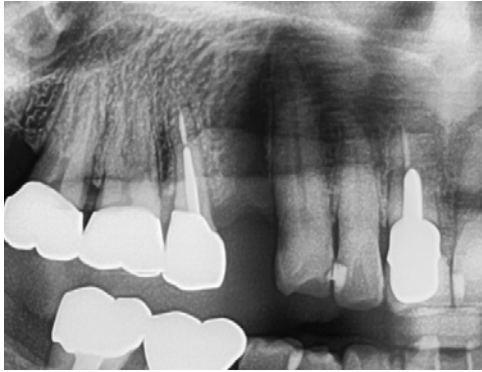
# Guided bone regeneration of a Type-II socket due to root fracture

## Patient History

Patient had a root fracture which required an extraction of the tooth as it had damaged the buccal wall. The condition was to be treated with bone grafting to preserve the socket and restore the wall defect and an implant.

## Process & Conclusion

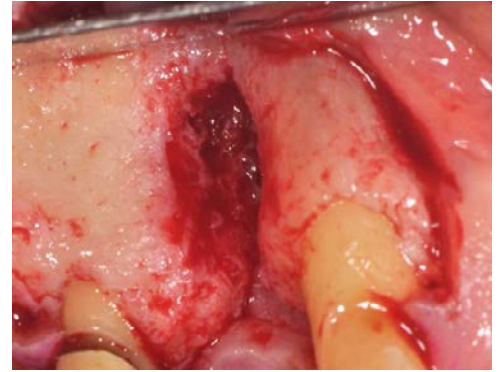
Two months after the tooth extraction, the socket was filled with InterOss® and then wrapped with InterCollagen® Guide. Re-entry at 9 months revealed a healthy-looking ridge suitable for an implant installation.



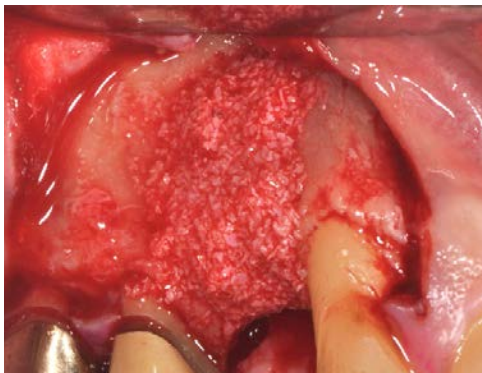
Post-extraction X-ray 2 months prior.



Pre-operative view.



A view of the defect.



InterOss® placement.



InterCollagen® Guide placement.



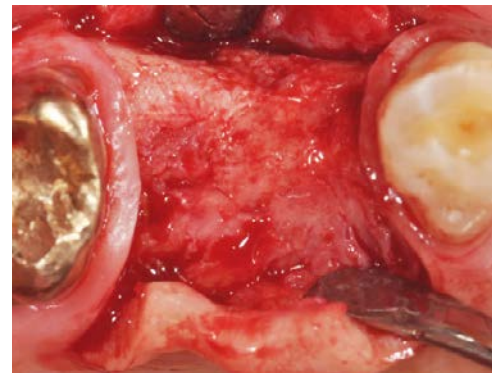
Post-surgical view.



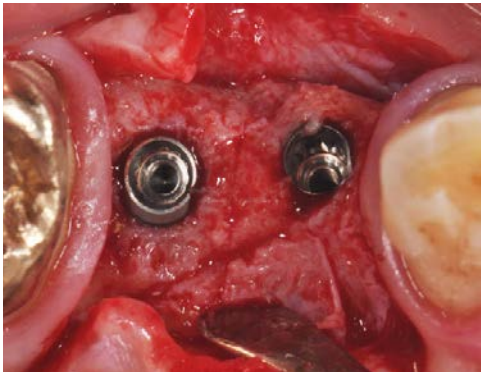
Post-GBR follow-up X-ray at 5 months.



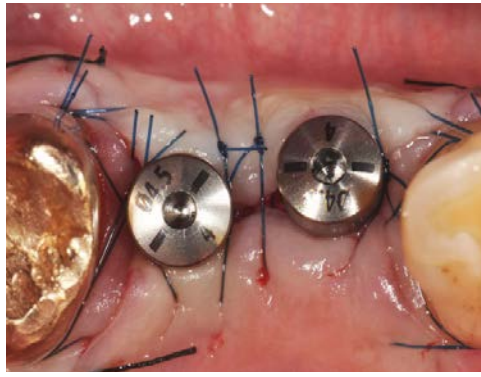
Pre-implant view at 9 months (tooth behind was also extracted).



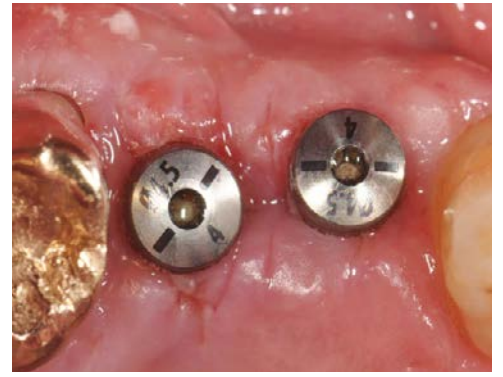
Re-entry view.



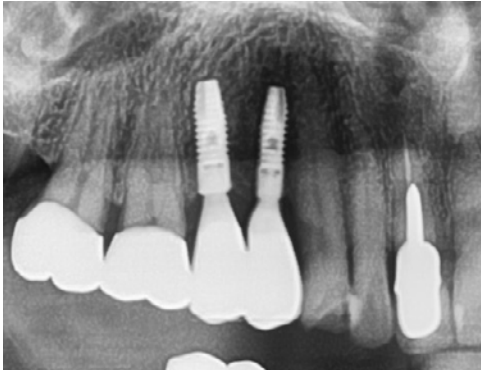
Implant placement.



Post-surgical view.



Post-operative view at 1 week.



Post-operative X-ray at 9 months after crown installation.