



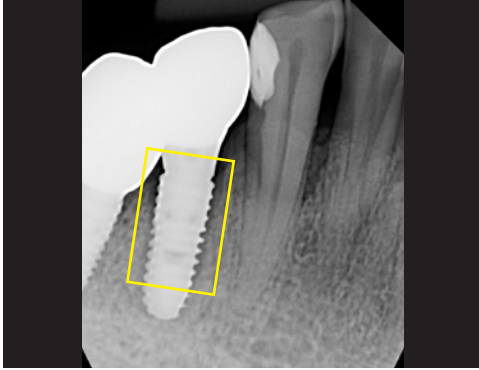
Tooth socket preservation and replacement of a failing implant

Patient History

Mobility was detected with one of the patient's existing implants, signifying the beginning of bone loss. The condition was to be treated with extraction of the affected implant, bone grafting, and implant reinstallation.

Process & Conclusion

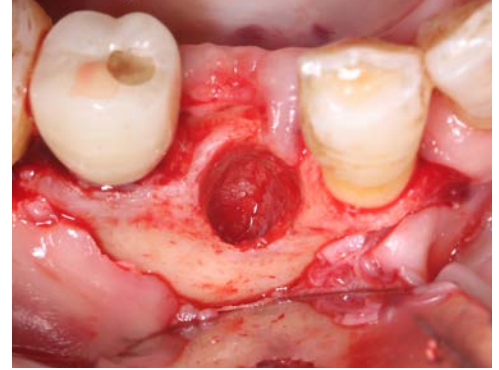
The socket left by the extracted implant was packed with a hydrated block of InterOss® Collagen then wrapped with a collagen membrane. Re-entry at 9 months reveals the cavity has been fully regenerated, enabling a secure installation of the new implant.



Pre-operative X-ray.



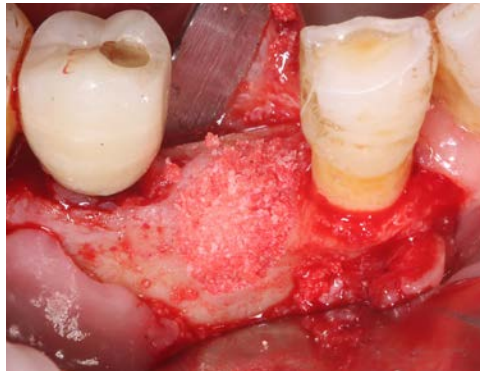
Pre-operative view.



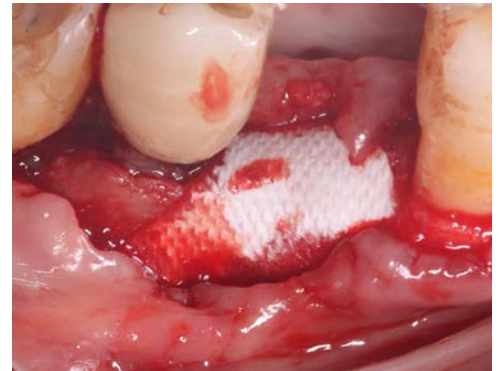
Post-degranulation view.



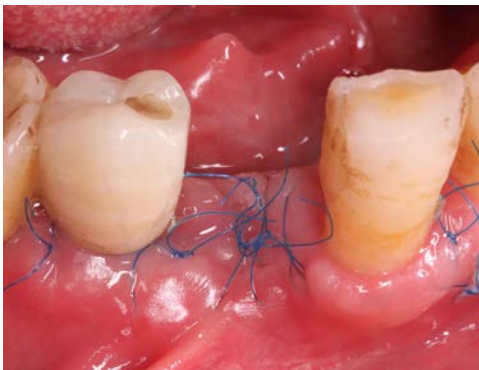
InterOss® Collagen hydrated with saline water.



InterOss® Collagen placement.



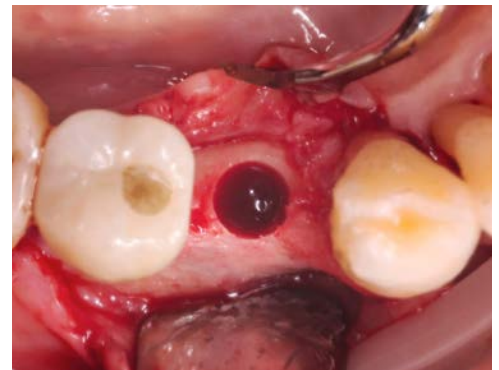
Collagen membrane placement.



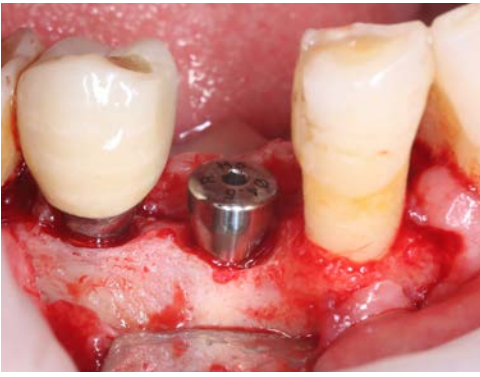
Post-surgical view.



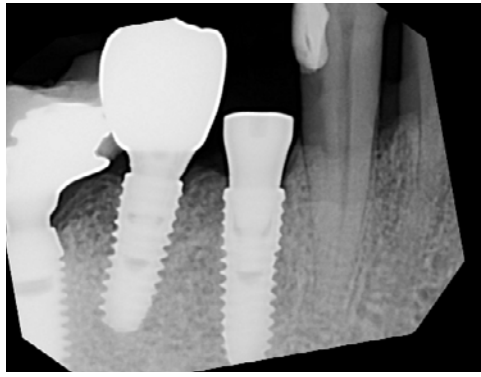
Re-entry view at 9 months.



An osteotomy to prepare for implant placement.



Implant and healing abutment placements.



Post-implant X-ray.



Post-implant follow-up at 4 weeks.