



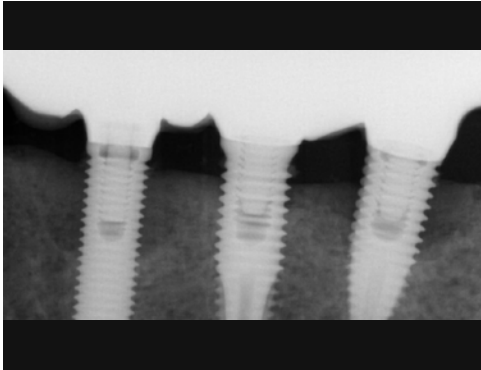
Alveolar ridge augmentation due to peri-implantitis

Patient History

Patient suffered from a peri-implantitis with bone loss occurring around multiple implants. The condition was to be treated with implantoplasty and bone grafting to fill in the gap.

Process & Conclusion

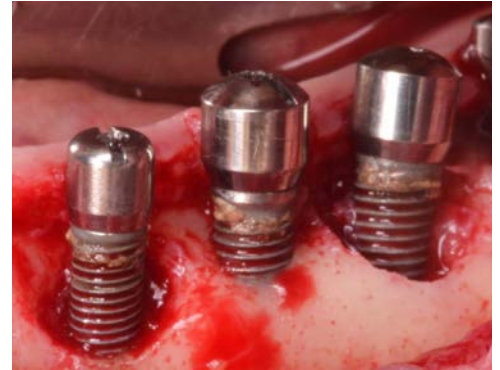
After an implantoplasty was performed, the receding bone around the implant was filled with a mixture of InterOss® and autogenous bone. X-ray at 12 months shows new bone now surrounding the implant.



Pre-operative X-ray.



A periodontal probe shows the depth of the defect.



A view of the bone defect.



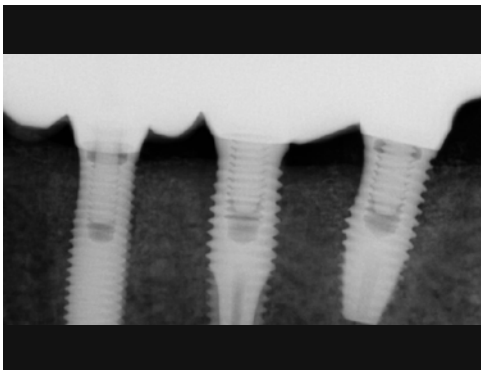
Post-implantoplasty view.



Placement of the InterOss® and autogenous bone mixture.



Post-operative view at 12 months.



Post-operative X-ray at 12 months.