



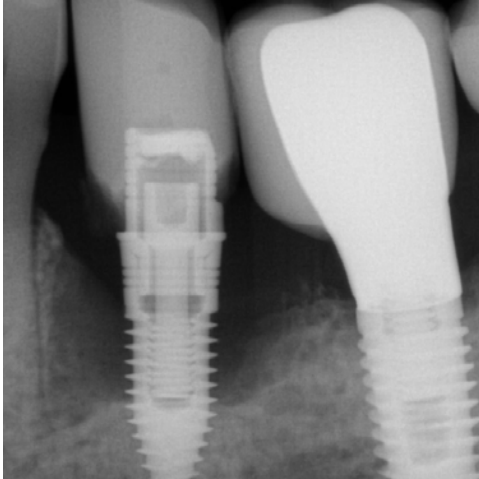
Implant removal due to peri-implantitis with simultaneous ridge augmentation

Patient History

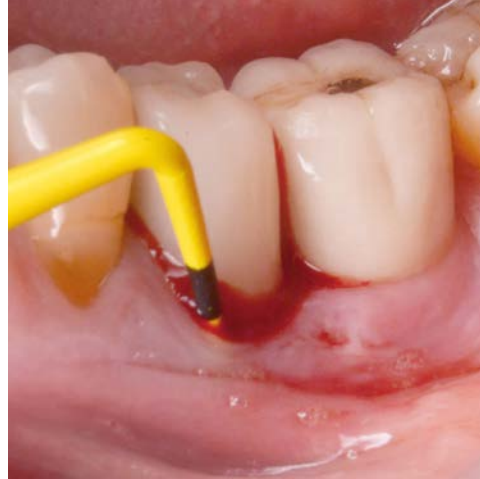
Patient suffered from an advanced peri-implantitis with bone loss occurring all around the implant, requiring an extraction. The condition was then to be treated with bone grafting to fill in the gap.

Process & Conclusion

After the implant was extracted, the defect was filled with a mixture of InterOss® and autogenous bone. Re-entry at 4 months showed regenerated bone at the cavity, enabling a new implant placement.



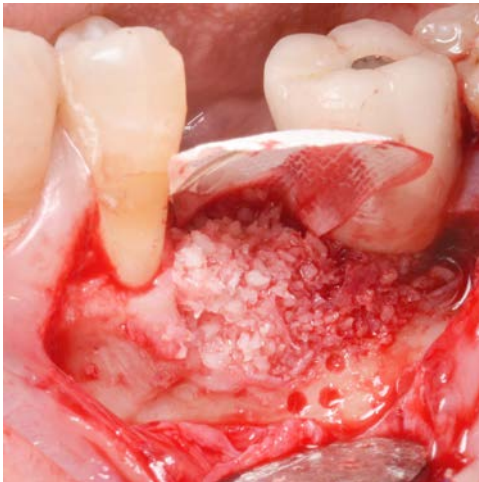
Pre-operative X-ray.



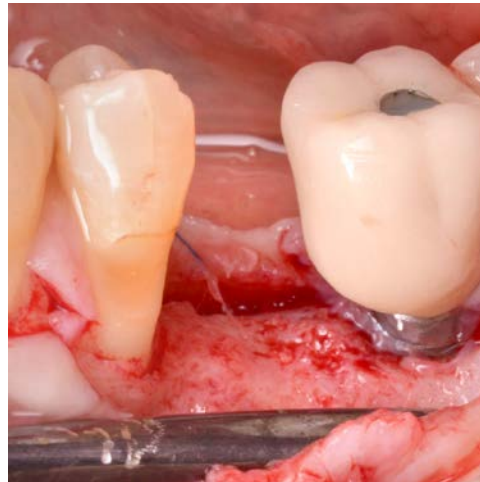
A periodontal probe shows the depth of the defect.



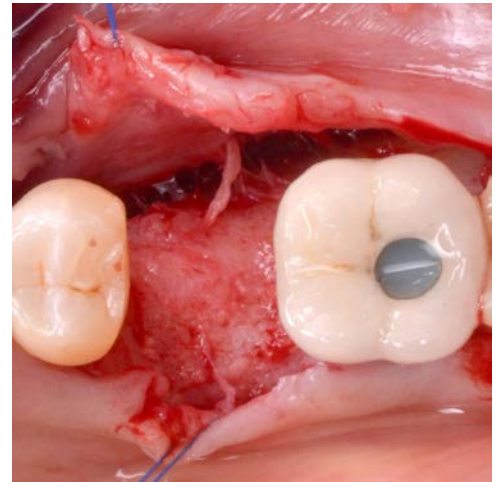
Post-extraction view.



Placement of the InterOss® and autogenous bone mixture.



Re-entry view at 4 months.



Another re-entry view at 4 months.