



Vertical ridge augmentation with guided bone regeneration

Patient History

Patient had missing teeth, and the immediate bone area has undergone a resorption, resulting in an insufficient depth to hold implants. The condition was to be treated with bone grafting to prep for installations.

Process & Conclusion

The gap left by the resorbed bone was filled with a mixture of InterOss® and autogenous bone. Re-entry at 6 months shows regenerated bone with enough density to successfully hold implants.



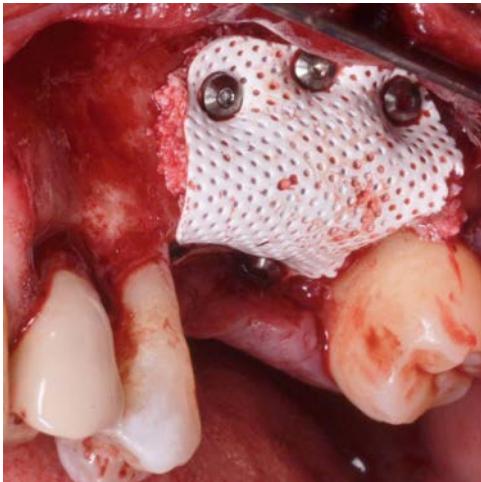
Pre-operative view.



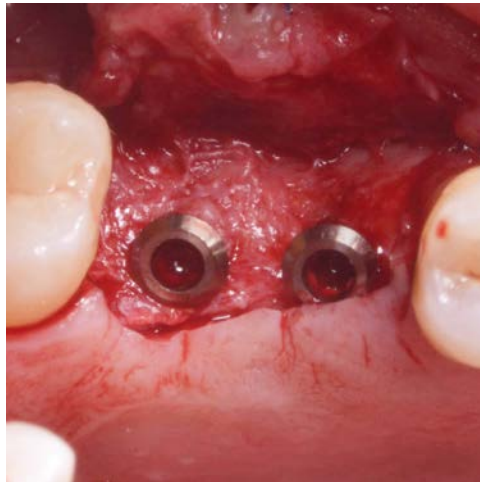
A view of the bone defect.



Placement of the InterOss® and autogenous bone mixture.



PTFE membrane placement.



Re-entry view at 6 months (implants installed).