



Implant placement with simultaneous lateral ridge augmentation

Patient History

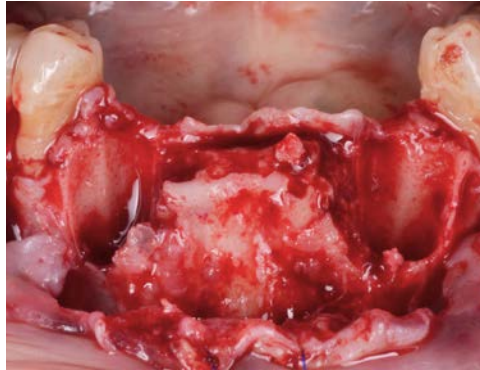
Patient had missing teeth and reshaped teeth that had to be extracted. The condition was to be treated with implants and bone grafting to restore a massive bone loss due to the extractions.

Process & Conclusion

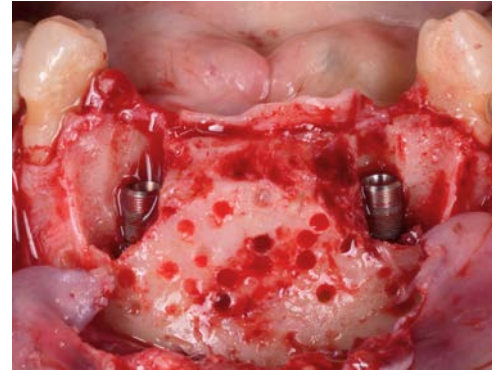
Implants were placed into the cavities left by the extracted teeth along with an additional one through osteotomy. Any open gaps were then filled with a mixture of InterOss® and autogenous bone. Re-entry at 4 months shows the defect has healed into new, solid bone mass.



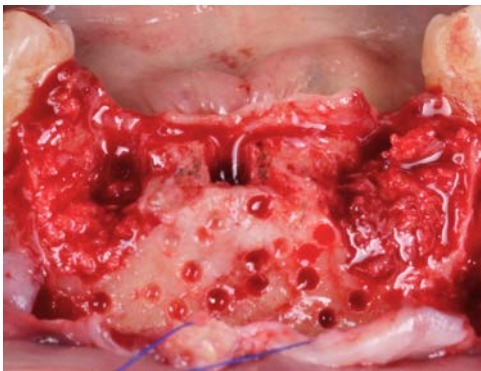
Pre-operative view.



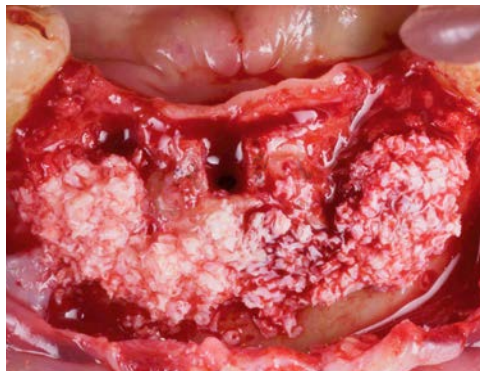
Post-extraction view.



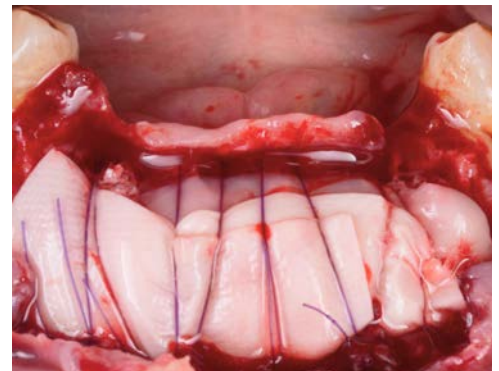
Implant placement.



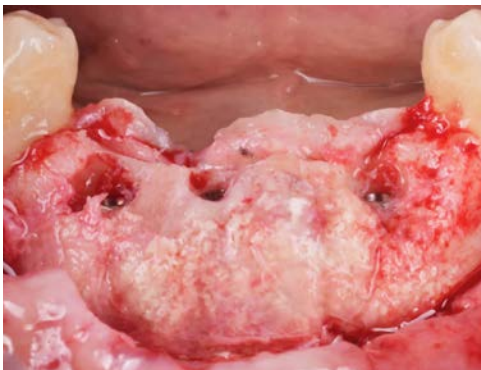
Autogenous bone placement.



InterOss® placement.



Collagen membrane placement.



Re-entry view at 4 months.



Another re-entry view at 4 months.