



Alveolar ridge augmentation with guided bone regeneration

Patient History

Patient had a missing tooth #9 with hypermobility detected on the adjacent tooth #8. The condition was to be treated with an extraction of tooth #8 and bone grafting to preserve the socket and to add sufficient thickness to prepare for future implants.

Process & Conclusion

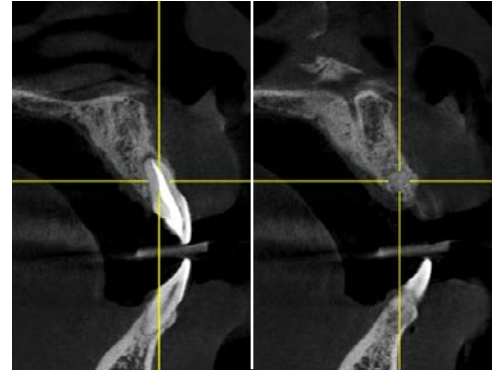
After extraction, tooth #8 socket was filled with SigmaOss® and the alveolar ridge with InterOss® before the area was wrapped with a collagen membrane. Re-entry at 7 months shows an absence of the socket and a healthy ridge suitable for implant installations.



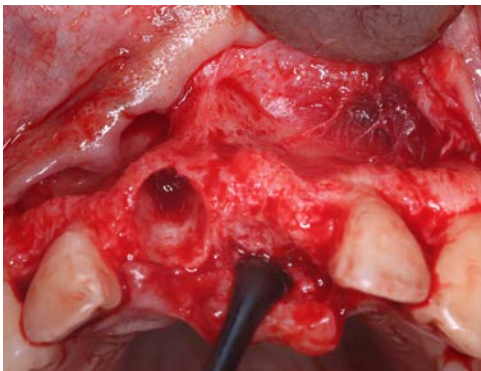
Pre-operative view.



Pre-operative X-ray (note the effect of the hypermobility).



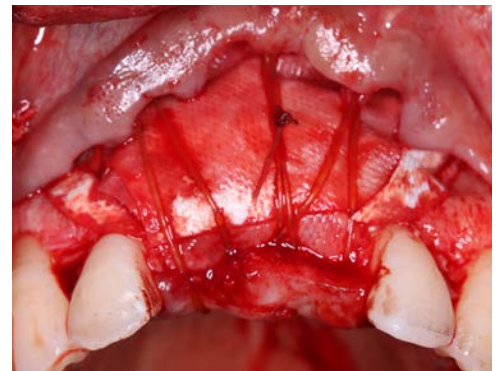
Pre-operative CBCT scans of tooth #8 and the missing #9 respectively.



Post-extraction view.



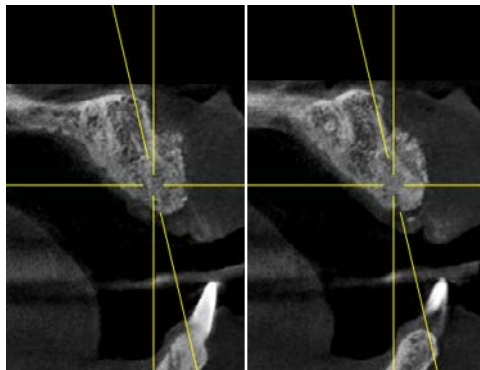
SigmaOss™ and InterOss® placements.



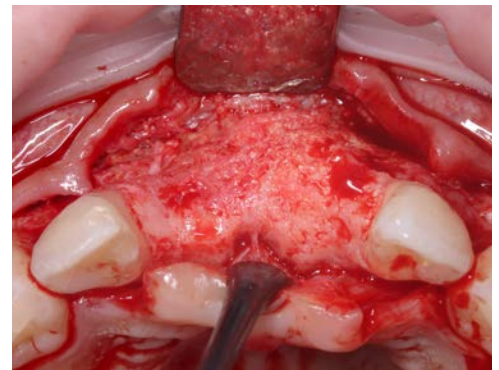
Collagen membrane placement.



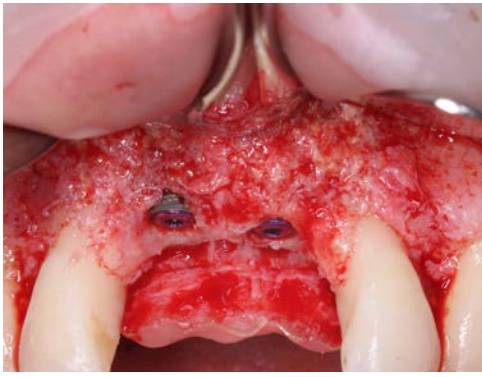
Post-surgical view.



Post-grafting CBCT scans at 6 months.



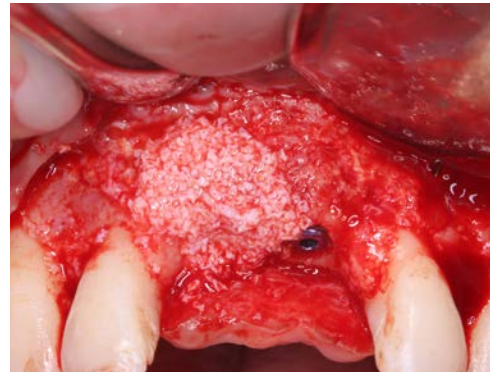
Re-entry view at 7 months.



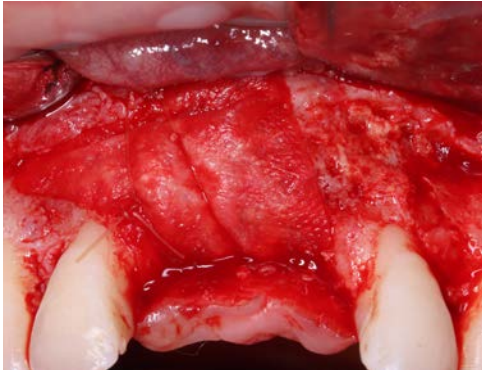
Implant placement.



Post-implant X-ray.



InterOss® placement.



Collagen membrane placement.



Post-surgical view.



Post-implant follow-up at 4 weeks.