



Staged guided bone regeneration and implant placement in anterior maxilla

Patient History

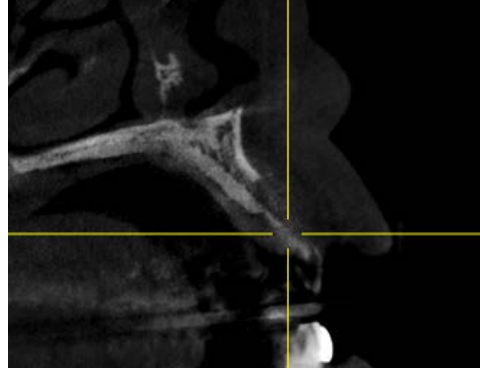
Patient is missing tooth #10, and its absence has caused resorption to the affected bone. The condition was to be treated with an implant and bone grafting to gain back the space needed for the device.

Process & Conclusion

InterOss® and SigmaOss® were placed in the defect's gap which were then wrapped with a collagen membrane. After 9 months, newly formed bone with a significant thickness can be observed.



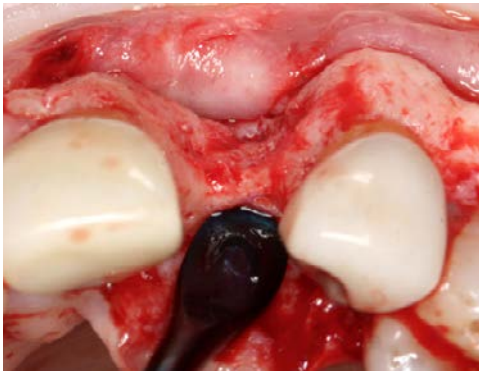
Pre-operative view.



Pre-operative CBCT scan.



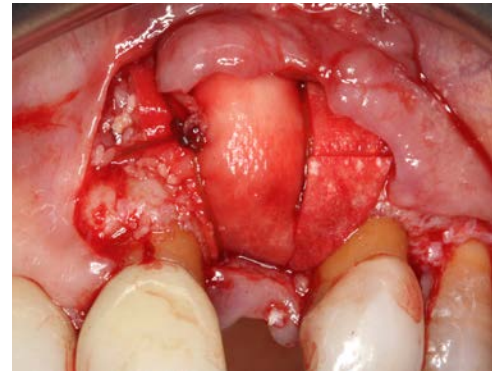
A view of the bone defect.



Another view of the bone defect.



InterOss® and SigmaOss™ placement.



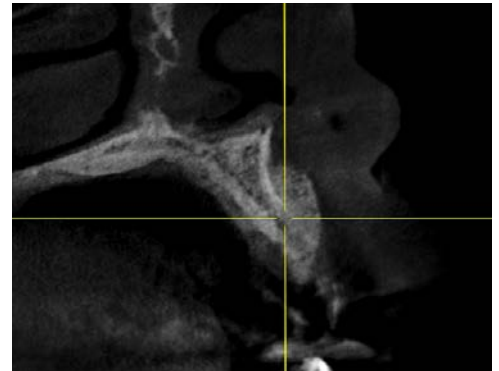
Collagen membrane placement.



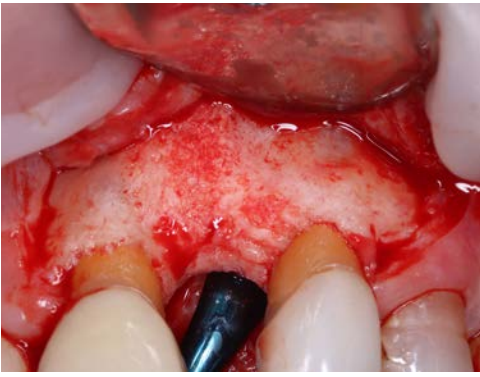
Post-surgical view.



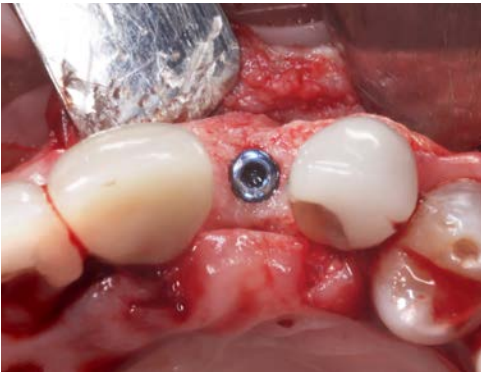
Post-grafting view at 9 months.



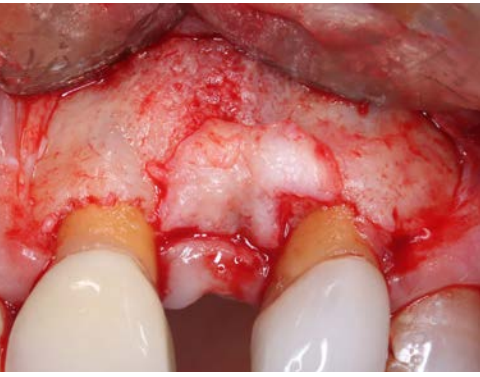
Post-grafting CBCT scan at 9 months.



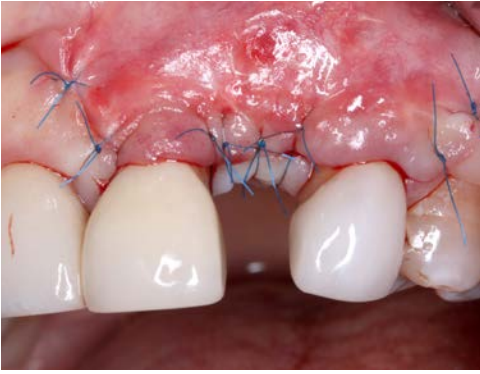
Re-entry view.



Implant placement.



Connective tissue graft placement.



Post-surgical view.



Post-implant follow-up view at 2 months.