



# Immediate implant placement with simultaneous guided bone regeneration

## Patient History

The facial wall of the affected tooth, which was extracted prior, showed signs of a dehiscence. The condition was to be treated with an implant and bone grafting to repair the cavity and restore the wall defect.

## Process & Conclusion

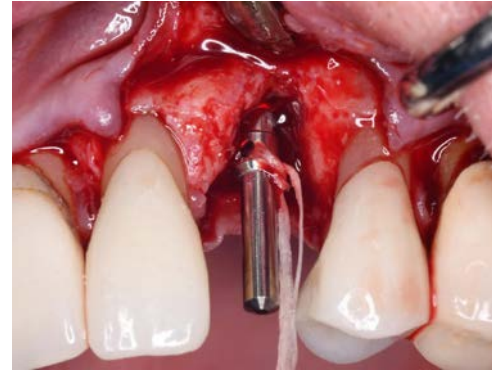
An implant was placed immediately in the cavity which, along with the facial gap, was then filled with InterOss®. Follow-up at 5 months revealed new bone with good space maintenance properties and no noted recession or ridge collapse during healing.



Pre-operative view.



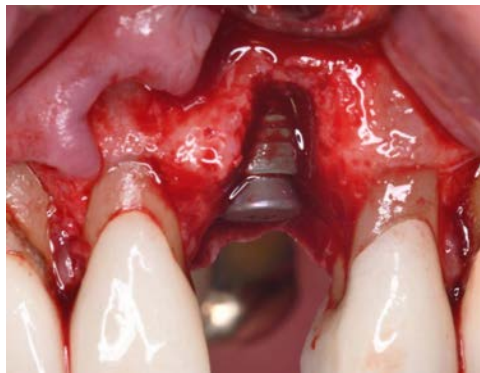
Pre-operative CBCT scan.



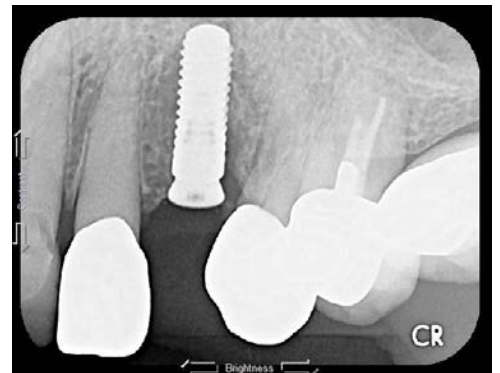
An osteotomy to prepare for implant placement.



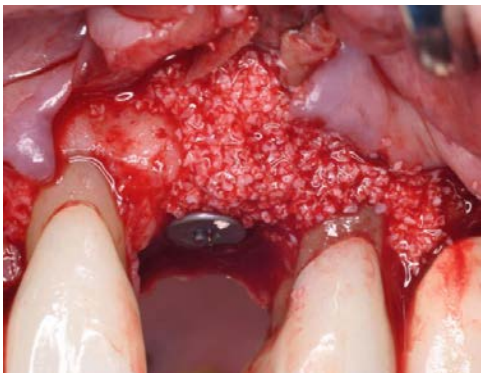
Intra-osteotomy X-ray.



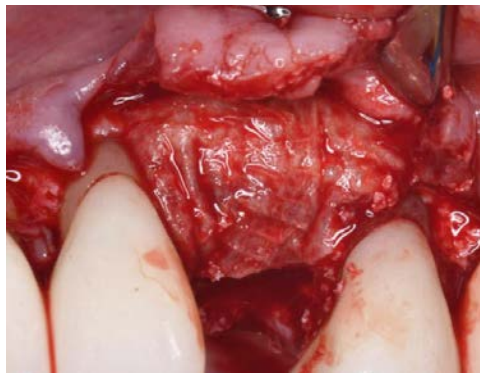
Implant placement.



Post-loading X-ray.



InterOss® placement.



Amnion chorion membrane placement.



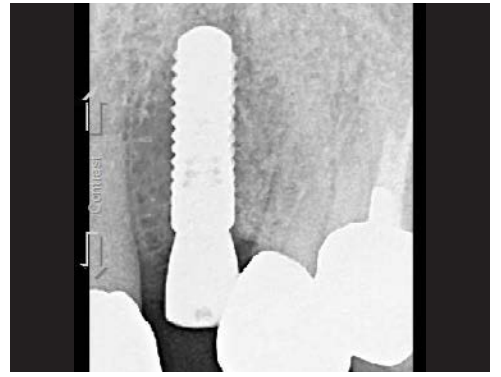
Post-surgical view.



Post-operative view at 6 weeks.



Post-operative view at 5 months.



Post-operative X-ray at 5 months.