



Immediate implant placement with simultaneous ridge augmentation

Patient History

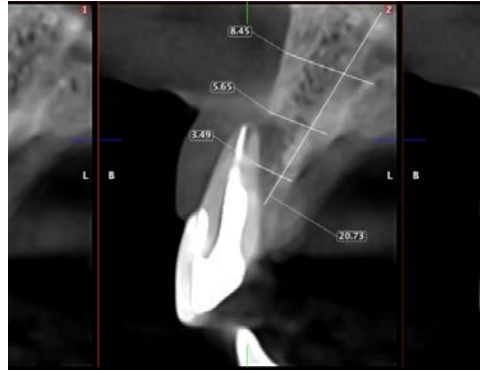
Patient suffered from a root fracture which led to a resorption that caused the buccal wall of the affected tooth to be missing. The condition was to be treated with an implant and bone grafting to rebuild the wall defect.

Process & Conclusion

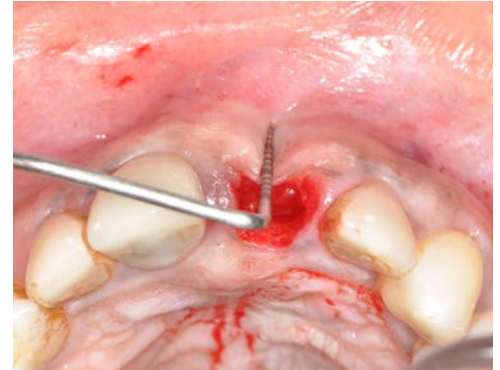
An implant was placed immediately in the cavity which, along with the wall defect, was then filled with InterOss® and covered with a collagen membrane and a connective tissue graft on top. Post-operative X-ray at 8 months shows a new buccal wall securely holding the implant in place.



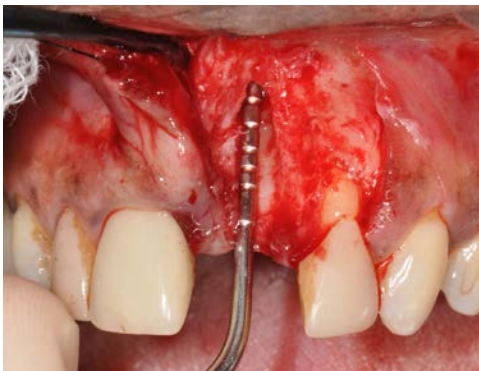
A periodontal probe shows the depth of the defect.



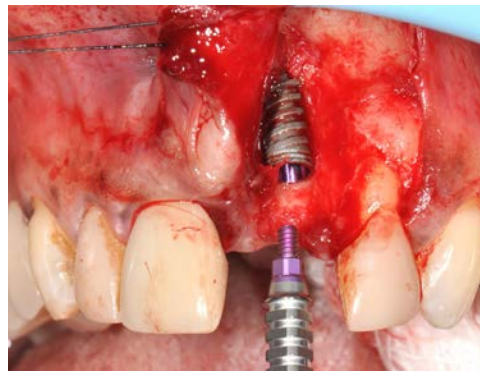
Pre-operative CBCT scan.



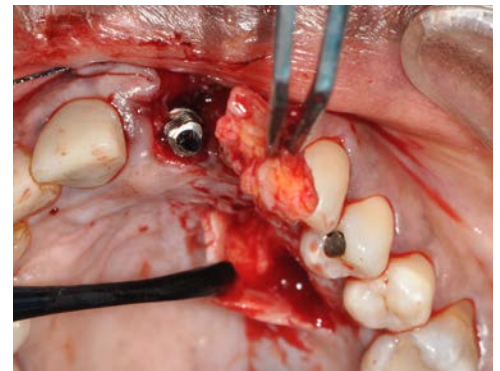
Post-extraction view.



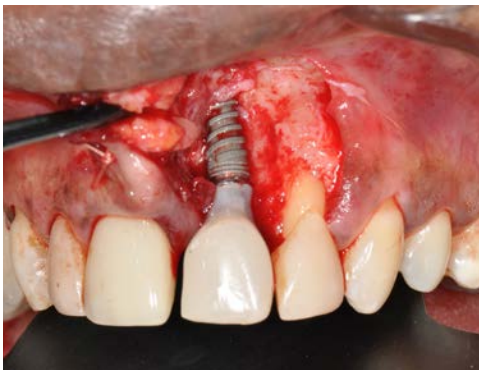
A view of the bone defect.



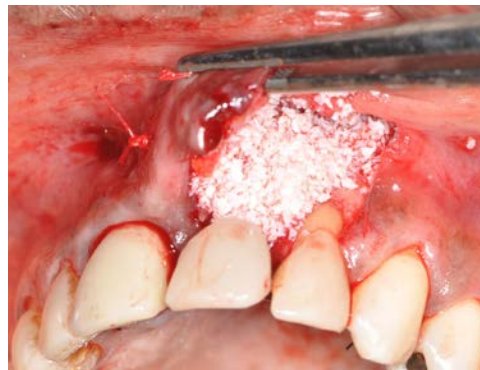
Implant placement.



Extraction of a connective tissue graft from the palate.



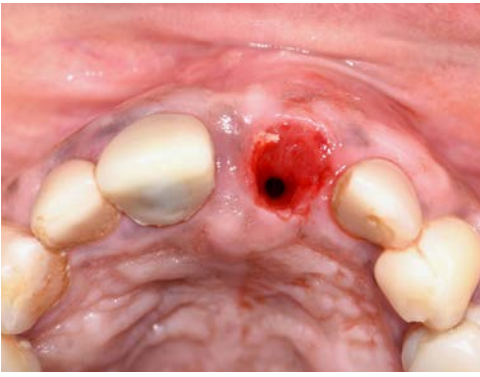
Provisional crown placement (connective tissue sutured on the inner side of the flap).



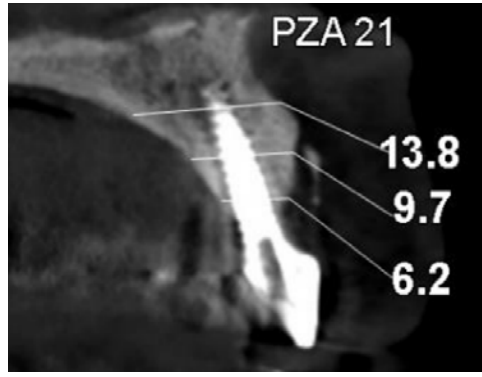
InterOss® placement.



Collagen membrane placement.



Post-operative view at 8 months.



Post-operative CBCT scan at 8 months.