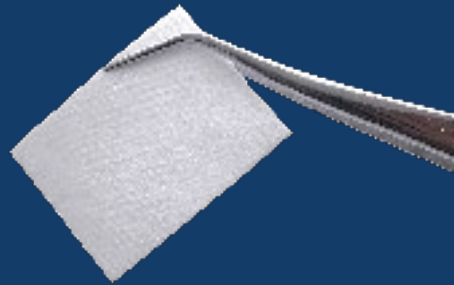


# INTERCOLLAGEN<sup>®</sup> GUIDE

RESORBABLE COLLAGEN MEMBRANE



## WHAT IS INTERCOLLAGEN<sup>®</sup> GUIDE

InterCollagen<sup>®</sup> Guide is a porcine-derived resorbable collagen membrane intended for periodontal and/or dental surgeries. When used in conjunction with a graft material for a guided bone regeneration procedure, the barrier membrane restricts the entry of rapidly proliferating non-osteogenic cells while allowing the ingrowth of slow-growing bone forming cells. InterCollagen<sup>®</sup> Guide can be easily sutured and trimmed to required size.



Resorbable Collagen Membrane

Reference	ICG1520	ICG2030	ICG3040
Dimensions	15 X 20mm	20 X 30mm	30 X 40mm



# SIGMAGRAFT

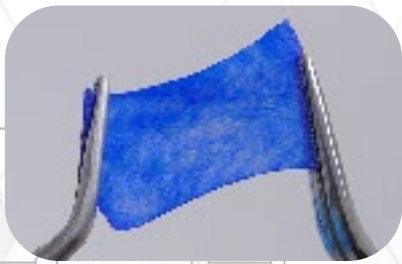
## THE BONE GRAFT SUBSTITUTE SPECIALISTS

### INDICATIONS FOR USE

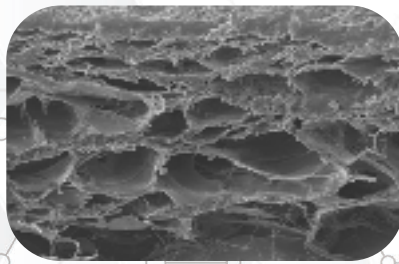
InterCollagen® Guide, alone or in combination with suitable augmentation materials e.g. autogenous bone, allogeneic, xenogeneic or alloplastic bone replacement materials, can be used in guided bone regeneration (GBR) and guided tissue regeneration (GTR) procedures as a biodegradable barrier:

- ✔ In the context of a treatment of fenestration defects
- ✔ In case of dehiscence defects
- ✔ After apicoectomy and resection or retained teeth
- ✔ In extraction sockets after tooth extractions
- ✔ In case of immediate or delayed augmentation around implants in extraction sockets

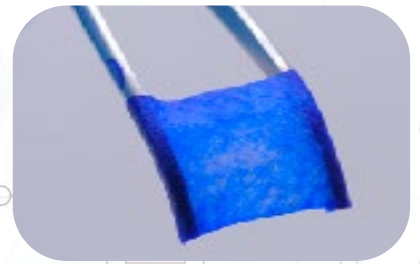
### BENEFITS



Highly stretchable



Multilayer and microporous



Very drapable

- ✔ Microporous and multilayer collagen structure facilitates enhanced nutrient exchange
- ✔ Excellent wettability, can be hydrated in situ and conforms to the defect rapidly
- ✔ Very drapable that allows for easy adaptation to the defect
- ✔ Naturally strong, fully resorbable, easily suturable

**Contact Us**

Address: SigmaGraft, Inc. 575 Sally Place Fullerton, CA 92831, USA  
Phone: (714) 525-0114, Toll Free: (888) 499-0114  
E-Mail: [info@sigmagraft.com](mailto:info@sigmagraft.com)