



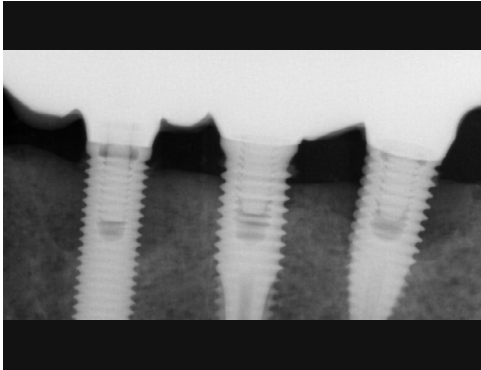
# Alveolar ridge augmentation due to peri-implantitis

## Patient History

Patient suffered from a peri-implantitis with bone loss occurring around multiple implants. The condition was to be treated with implantoplasty and bone grafting to fill in the gap.

## Process & Conclusion

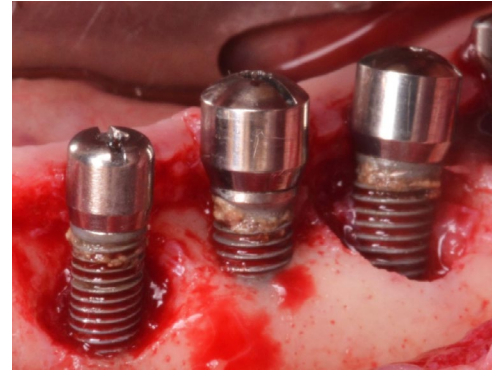
After an implantoplasty was performed, the receding bone around the implant was filled with a mixture of InterOss® and autogenous bone. X-ray at 12 months shows new bone now surrounding the implant.



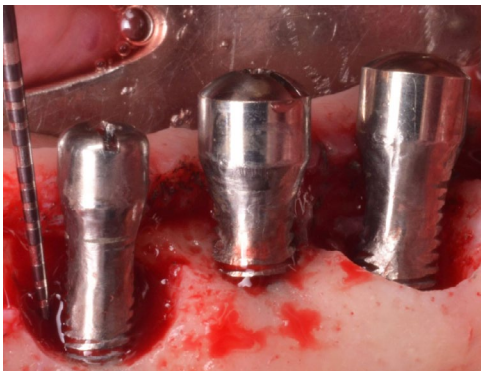
Pre-operative X-ray shows bone loss around multiple implants.



A periodontal probe easily enters the gum due to lack of bone underneath.



A view of the bone defect.



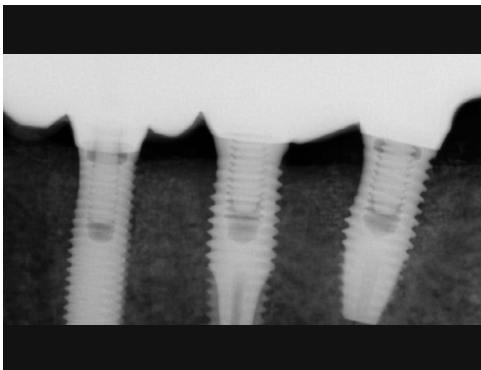
Post-implantoplasty view.



Placement of the InterOss® and autogenous bone mixture.



12 months after, there was now solid bone underneath the gum.



Post-operative X-ray at 12 months shows there were no more gaps.