



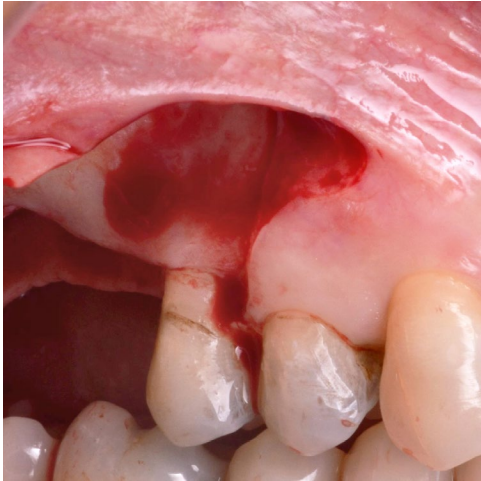
Sinus floor elevation and vertical ridge augmentation

Patient History

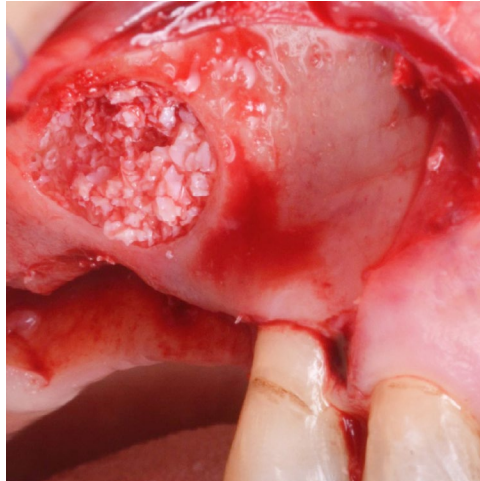
Patient had missing teeth and the immediate bone area has undergone a resorption which lowered the sinus floor. The condition was to be treated with a sinus floor elevation to prepare for an implant installation.

Process & Conclusion

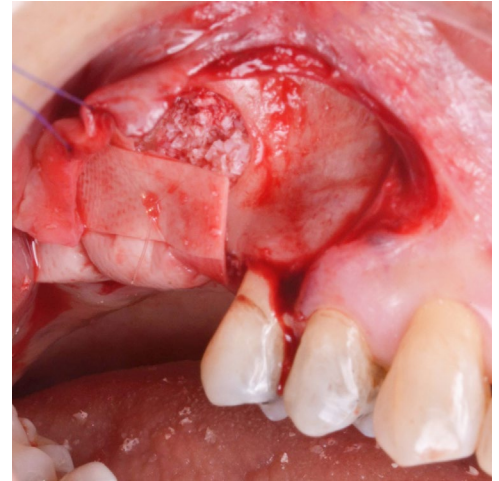
After the sinus floor has been lifted, the resulting cavity was filled with a mixture of InterOss® and autogenous bone. CBCT scan at 5 months shows newly formed bone that continues to remain solid even after 2 years.



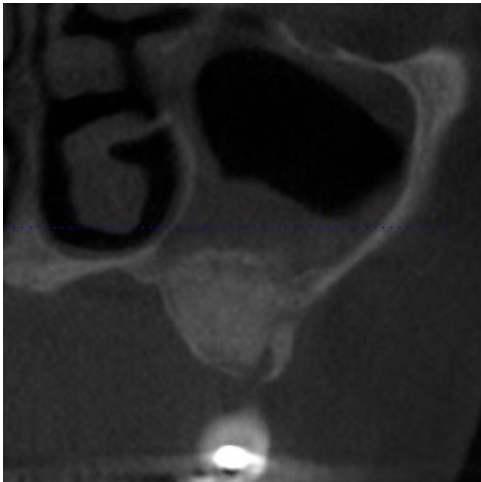
Flap elevation.



Placement of the InterOss® and autogenous bone mixture.



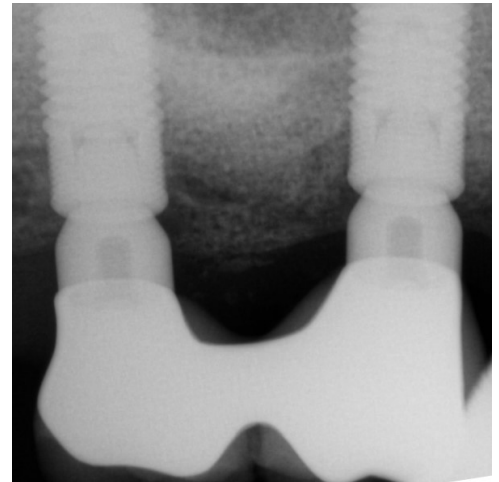
Membrane placement.



Post-operative CBCT scan at 5 months shows solid bone below the sinus floor.



Post-implant view at 2 years.



Post-implant X-ray at 2 years.