



# Implant placement and simultaneous crestal sinus lift

## Patient History

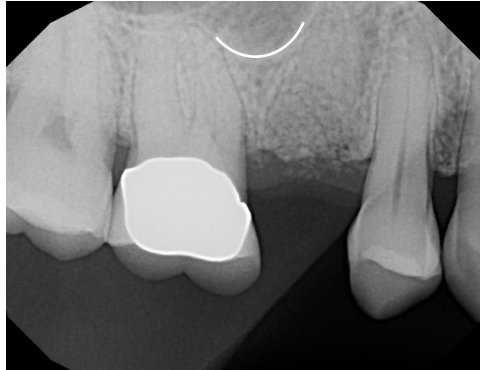
Patient had a missing molar which had triggered resorption to the bone, lowering the sinus floor. The condition was to be treated with an implant and a crestal sinus lift to ensure sufficient height for the device.

## Process & Conclusion

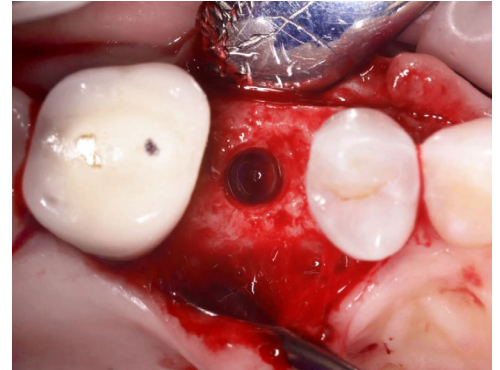
After a careful osteotomy, InterOss® granules were grafted through the opening prior to implant installation. Follow-up X-ray at 3 months shows the maintained thickness of the grafted bone and, at 8 months, a highly observable formation of new cortical bone with increased height.



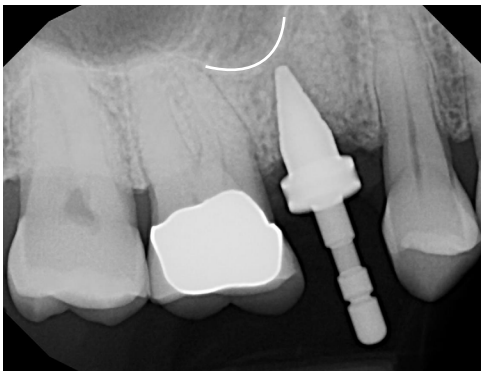
Pre-operative view.



Pre-operative X-ray shows the lowered sinus floor.



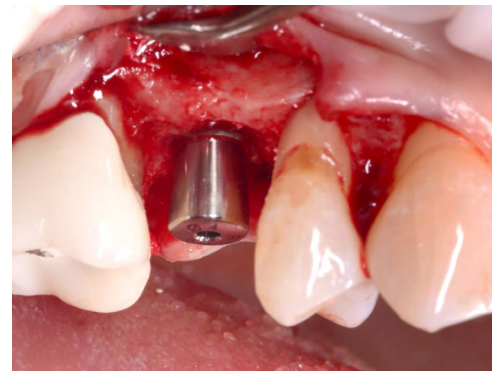
An osteotomy to prepare for implant placement.



Intra-osteotomy X-ray.



X-ray shows InterOss® placement.



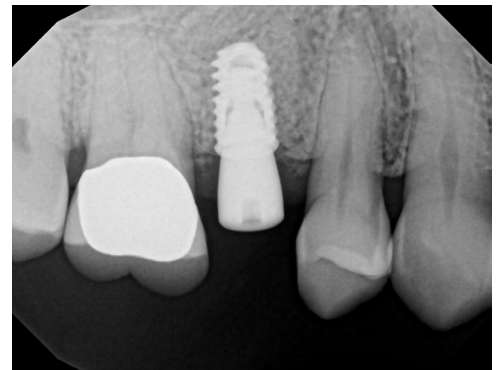
Implant placement and healing abutment connection.



Immediate post-operative X-ray.



Post-implant placement at 3 months.



Post-implant placement X-ray at 3 months.



Post-operative at 8 months and crown placement.

Post-operative X-ray at 8 months shows InterOss® has become new bone.