

Implant placement and simultaneous guided bone regeneration

Patient History

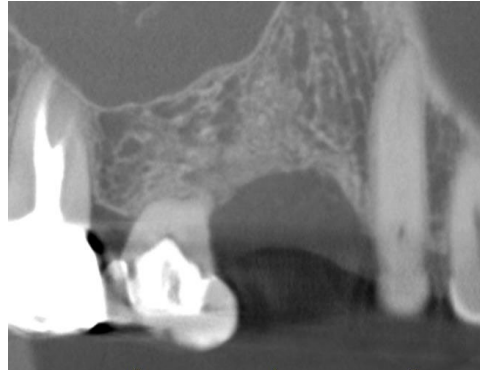
Patient had a missing tooth where the affected bone no longer had sufficient thickness to secure an implant at an ideal position based off of the adjacent teeth. The condition was to be treated with an implant and bone grafting to make up for that lack of volume.

Process & Conclusion

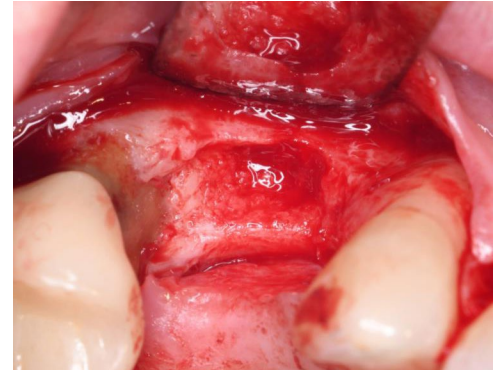
Implant was placed 2 mm supracrestally and InterOss® was used to graft the infrabony and suprabony component of the defect. No adverse events were recorded during healing, and after 3 months, the volume of the ridge was perfectly maintained as can be seen in the X-ray.



Pre-operative view.



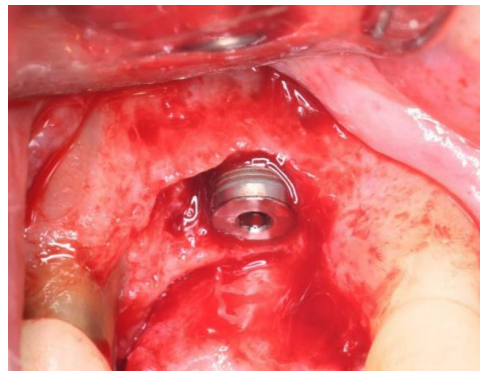
Pre-operative CBCT scan shows the depth of the defect.



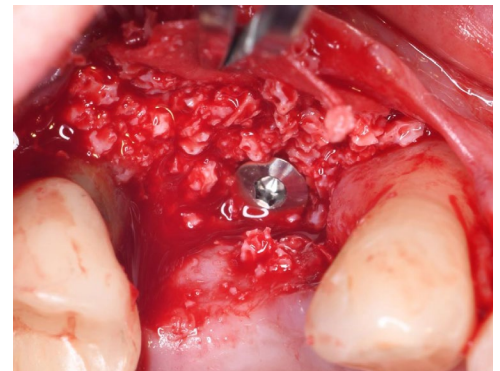
A view of the bone defect.



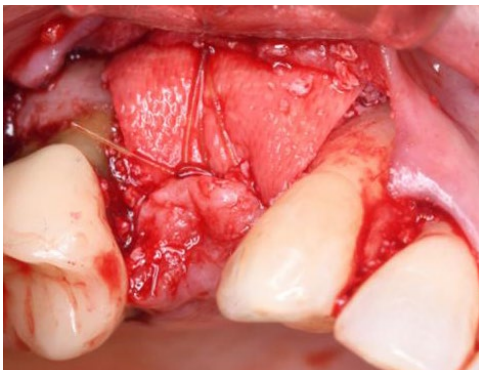
Intra-osteotomy X-ray shows the positioning of the drill bit.



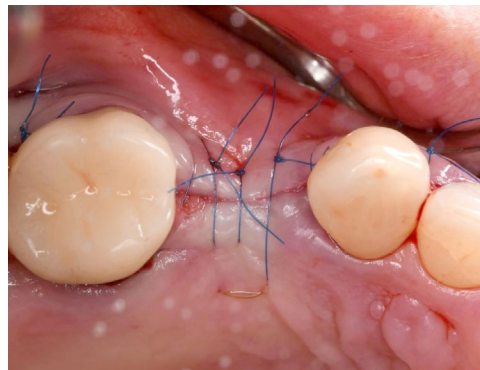
Implant placement.



InterOss® placement.



Collagen membrane placement.



Immediate post-operative view.



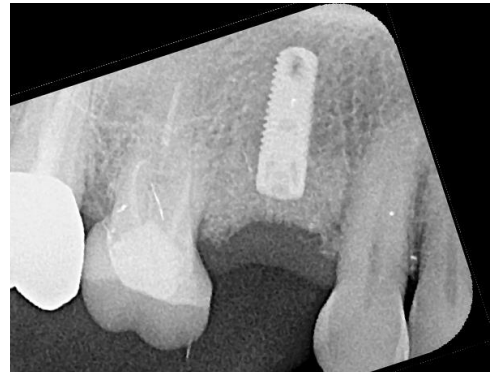
Immediate post-operative CBCT scan.



Post-operative view at 3 months.



Another post-operative view at 3 months.



Post-operative X-ray at 3 months shows the grafted bone has maintained its volume.