



# Lateral window sinus floor elevation with simultaneous implant placement

## Patient History

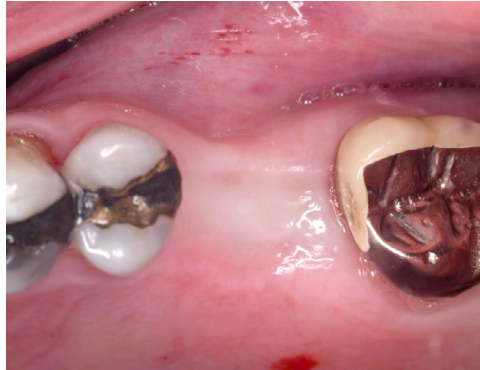
Patient had a missing tooth, and the immediate bone area has undergone a resorption, expanding the sinus cavity. The condition was to be treated with an implant and a sinus lift to achieve enough bone mass to hold the device.

## Process & Conclusion

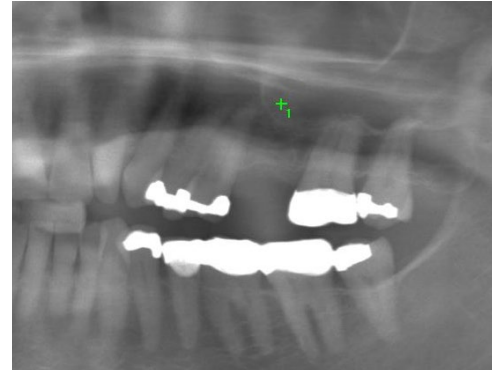
With the lateral window carved, an implant was placed immediately and the cavity, preventively lined with a collagen membrane, filled with InterOss®. No adverse events were recorded during healing, and the granules did not perforate the sinus membrane.



Pre-operative view.



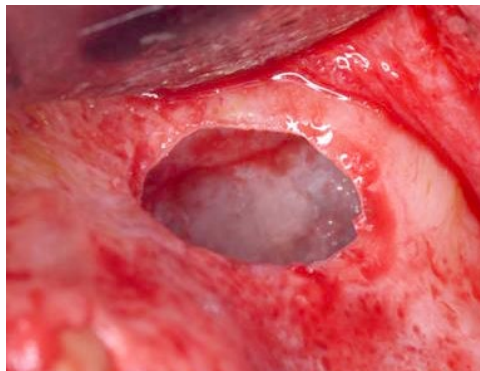
Pre-operative view, occlusal shot.



Pre-operative X-ray shows the missing tooth.



Pre-operative CBCT scan shows the extent of the pneumatized sinus.



A view of the lateral window.



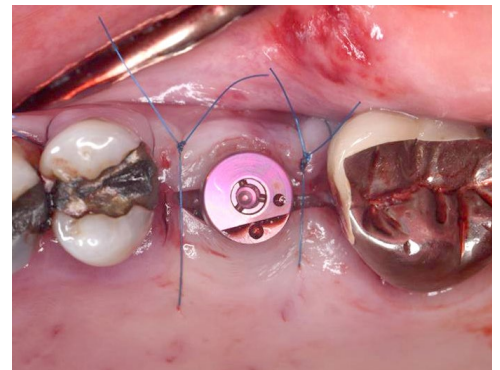
Implant placement.



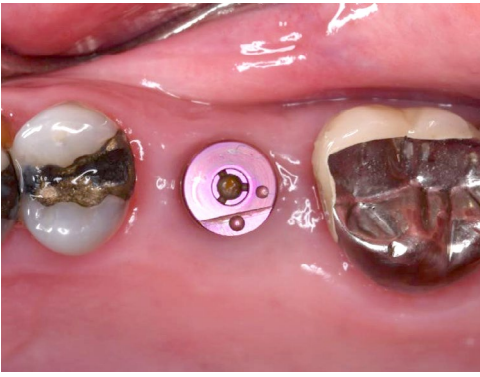
InterOss® placement.



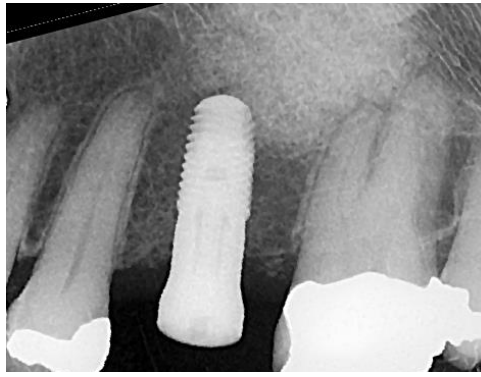
Collagen membrane placement.



Immediate post-operative view.



Post-operative view at 4 months.



Post-operative X-ray at 4 months shows no visible sinus cavity near the implant.



And the CBCT scan shows the grafted bone lifting the sinus floor, making space for the implant.