

Horizontal ridge augmentation

Dr. Mariano Estrada
Vital Tech Dental Academy
Dominican Republic



Patient History

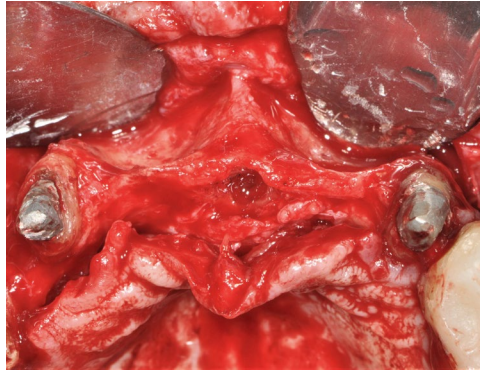
Patient was missing teeth along their maxillary labial area with the affected bone undergoing a severe resorption. The condition was to be treated with bone grafting to restore the massive thickness loss and implants.

Process & Conclusion

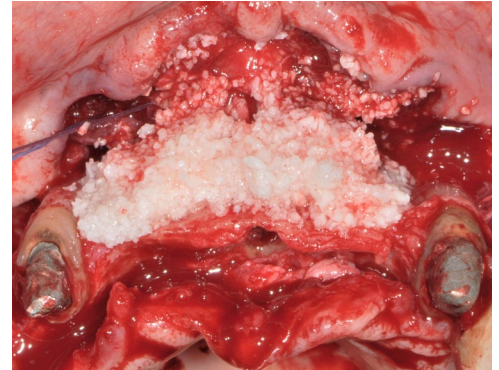
The sunken ridge was filled with InterOss® granules which were then wrapped with collagen membranes. Re-entry at 8 months shows newly regenerated bone at the defect site as thick as 7 mm.



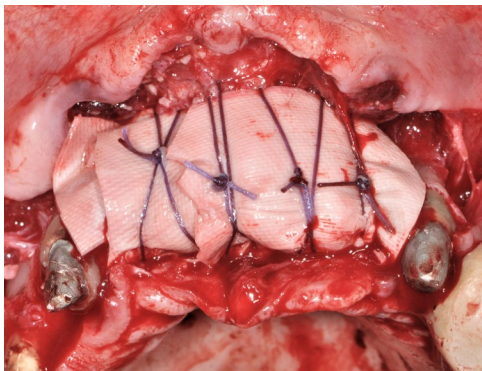
Pre-operative X-ray shows lack of bone mass in the maxillary labial area.



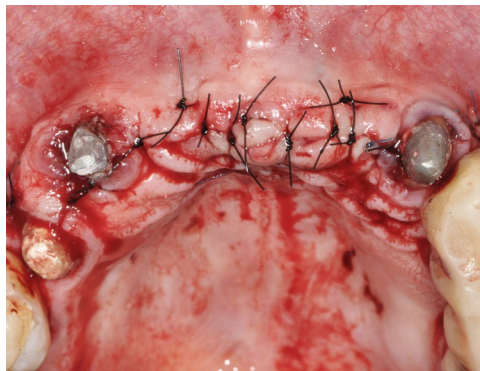
A view of the bone defect.



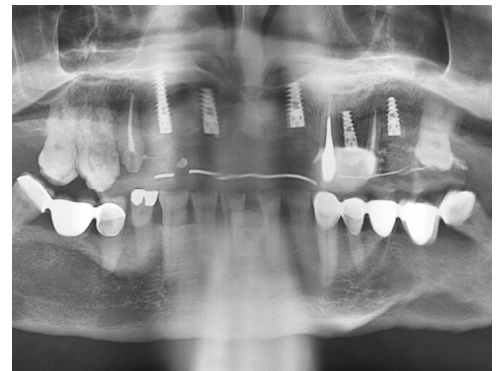
InterOss® placement.



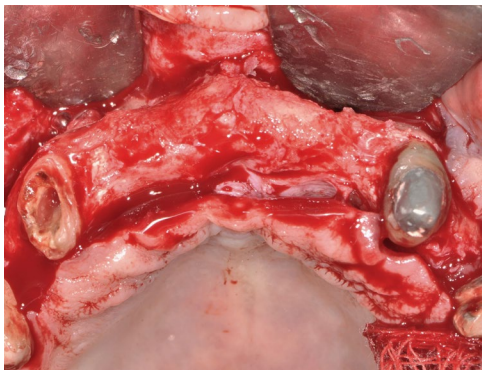
Membrane placement.



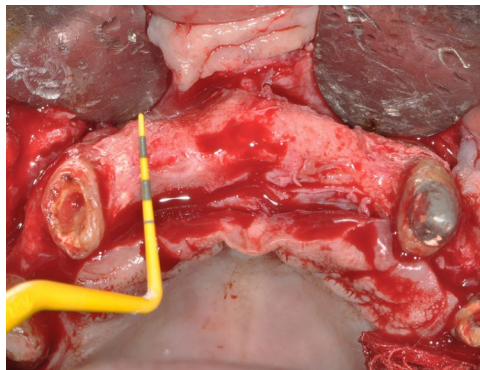
Immediate post-operative view.



Post-operative X-ray at 8 months



Post-operative view at 8 months.



Newly formed bone measures at 7 mm in thickness.