



# Immediate implant placement with simultaneous ridge augmentation

## Patient History

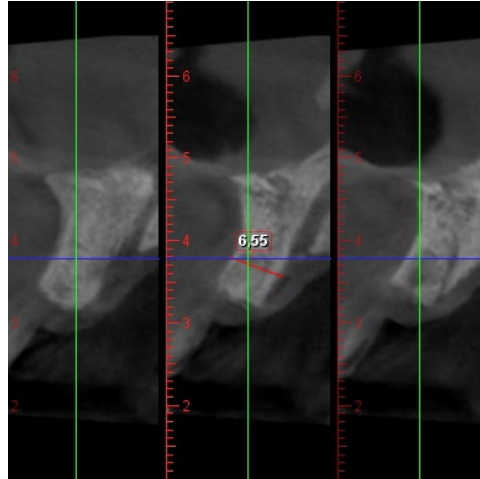
Patient had a missing tooth, and the immediate bone area has undergone a resorption, the ridge lacking in thickness to hold an implant. The condition was to be treated with bone grafting to prep for installation.

## Process & Conclusion

An implant was placed immediately, and any part of it that was exposed due to the resorbed bone was covered with InterOss® Collagen then wrapped with InterCollagen® Guide. 6 months later, the ridge has gained enough new bone to hold the implant successfully in place.



Pre-operative view.



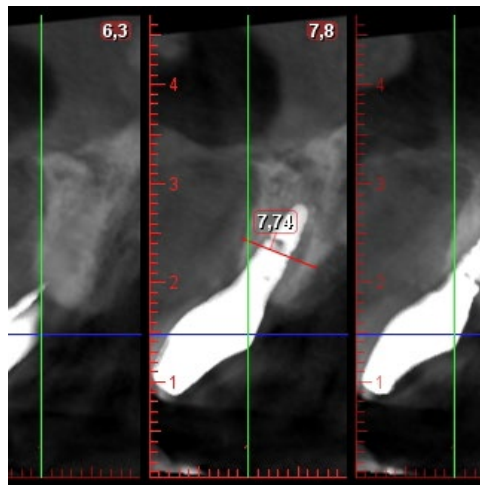
Pre-operative CBCT scan shows the thickness of the resorbed ridge.



Another pre-operative CBCT scan shows an occlusal view of the defect.



Post-operative view at 6 months.



Post-operative CBCT scan at 6 months shows the ridge has increased in overall thickness.



Another 6-month CBCT scan shows an occlusal view of the regenerated bone.