



Immediate implant placement with simultaneous ridge augmentation

Patient History

Patient had a missing tooth, and the immediate bone area has undergone a resorption, the ridge lacking in thickness to hold an implant. The condition was to be treated with bone grafting to prep for installation.

Process & Conclusion

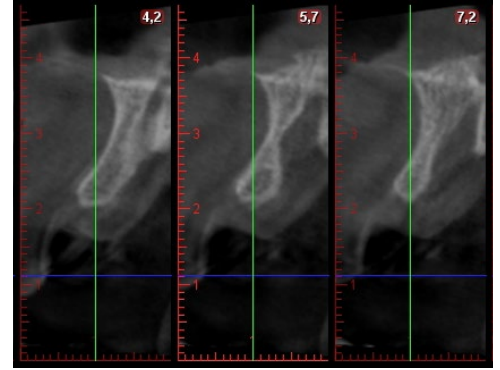
An implant was placed immediately, and any part of it that was exposed due to the resorbed bone was covered with InterOss® Collagen then wrapped with InterCollagen® Guide. 6 months later, the ridge has gained enough new bone to hold the implant successfully in place.



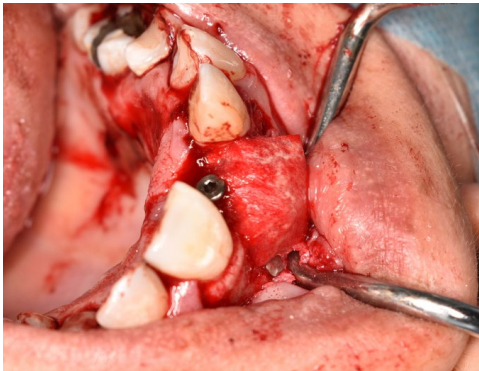
Pre-operative view.



Pre-operative CBCT scan shows the vertical resorption.



Another pre-operative CBCT scan shows the horizontal resorption.



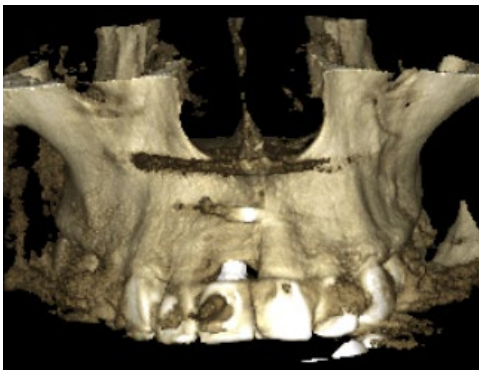
Placements of InterOss® Collagen and InterCollagen® Guide.



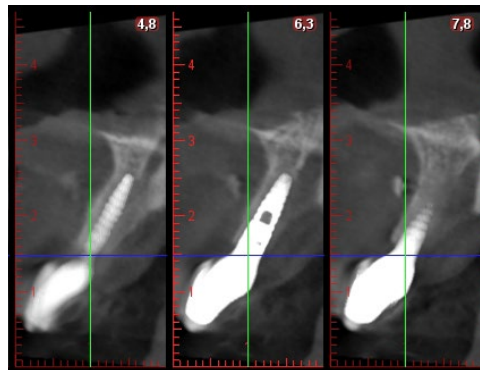
Immediate post-operative view.



Post-operative view at 6 months.



Post-operative CBCT scan at 6 months shows implant securely held in place.



Another 6-month CBCT scan at shows implant fully surrounded by bone.