

BONESIGMA™ TCP

TRICALCIUM PHOSPHATE GRANULES



WHAT IS BONESIGMA™ TCP

BoneSigma™ TCP is a synthetic resorbable calcium phosphate bone graft material which consists of 100% beta-tricalcium phosphate. It provides highly interconnected and well distributed micro- and macropores for complete resorption. This product provides rapid osteointegration and recovery in most dental implant surgeries. BoneSigma™ TCP is available in granules.



TriCalcium Phosphate Granules

Granule Size	0.50-1.00 mm			
Weight	0.25 g	0.50 g	0.75 g	1 g
Vials	Single or bundle package available			

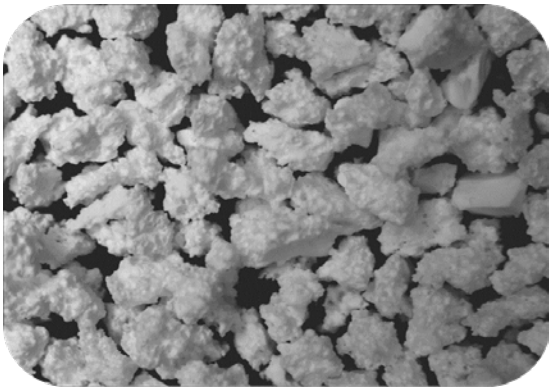


SIGMAGRAFT

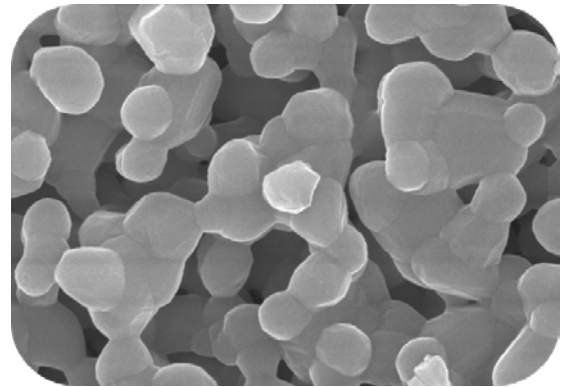
THE BONE GRAFT SUBSTITUTE SPECIALISTS

BENEFITS

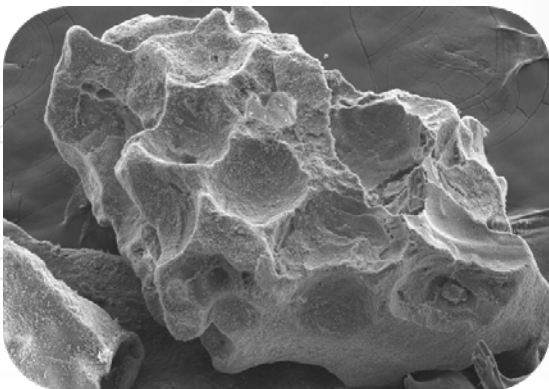
- ✔ 100% synthetic material enabling ingrowth of healthy bone tissue
- ✔ High purity of beta-TCP phase (over 95%)
- ✔ Interconnected and uniformly distributed micro- and macropores enhancing the osteoconductivity
- ✔ Enhanced bioactivity due to polygonal shape and large surface area
- ✔ Large porosity of 60-70% with bimodal pore distribution



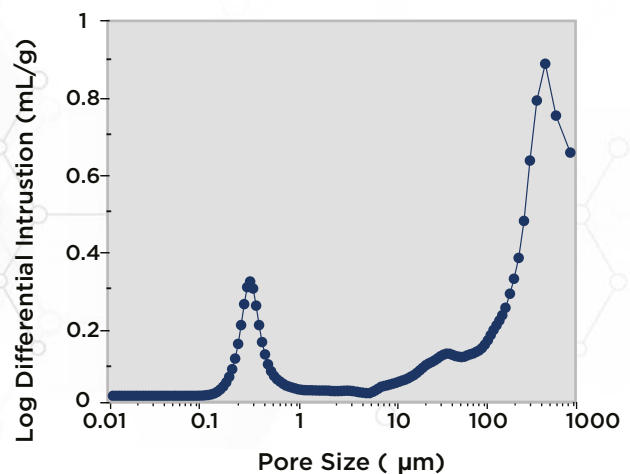
BoneSigma™ TCP granules



Microporous structure



Macroporous structure



Bimodal pore distribution

Contact Us

Address: SigmaGraft, Inc. 575 Sally Place Fullerton, CA 92831, USA
Phone: (714) 525-0114, Toll Free: (888) 499-0114
E-Mail: info@sigmagraft.com